

ENERGY EFFICIENT INNOVATIONS

FOR A SUSTAINABLE FUTURE

JAN - APRIL 2024

ESSENTIAL ENERGY SAVING PRODUCTS

- Lamps & Luminaires
- Controls
- Heating
- Hand Dryers
- Heat Recovery & Ventilation
- Voltage Optimisation
- Variable Speed Drives
- Renewables
- EV Charging Unit Testers
- Lease Finance Solutions



YOUR
ELECTRICAL
EXPERTS

IN-BRANCH | CEF.CO.UK | TRADE CATALOGUE | APP

All products are subject to availability and prices are correct at the time of print.
Prices valid until 5:30pm on 30th April 2024.



YOUR ELECTRICAL EXPERTS



Please Note:

All energy saving calculations are based on an electricity cost of £0.28 kWh.

Carbon emission calculations are based on the 2023 UK Government Emission Factor of 0.207kg/CO₂e/kWh of electricity produced.

Calculations are correct at time of printing

CONTENTS

Lamps

LED GLS	6
LED Candles	7
LED GU10	8
LED G24	9
LED 2D	9
LED Discharge	10
LED T8 Tubes	11-12
LED T5 Tubes	12
LED Capsules [G4 / GY6.35 / G9]	13

Luminaires

LED Battens	14
LED Non-Corrosive Fittings	15
LED Linear Vapour Proof Fittings.....	16
LED FRD Tri-Colour Downlights.....	16-17
Low Profile Commercial Downlights	18
Backlit LED Panels	19
Klip Tri-Colour LED Bulkheads	20
Tri-Colour LED Wall Packs	21
Guardian LED Floodlights	22
Solar-Powered	23
LED Highbays	24

Controls

Wall / Ceiling Mounted PIR's	25-26
Time Lag Switches.....	27-29
PIR & Microwave Sensors.....	28-29
Power Factor Correction Capacitor.....	29

Heating & Controls

Designer XR Electric Radiators	30
Storage Heaters	31-32
Panel Heaters	32
Timers & Thermostats.....	33

Hand Dryers

Tempesta Blade Automatic Hand Dryers	34
Tempesta Automatic Hand Dryer	35
Tempesta Plus Automatic Hand Dryer	35

Heat Recovery & Ventilation

Single Room Heat Recovery Unit	36
Zone 1 Whisper Quiet Fan	36
Whisper Continuous All-In-One Fan	36

Voltage Optimisation

Single Tap Voltage Optimisation Unit	37
Multi Tap Voltage Optimisation Unit.....	38

Variable Speed Drives

Enclosed Variable Speed Drives	39
--------------------------------------	----

Renewables

Solar PV, Mounting Systems, Battery Storage & Accessories	40-41
--	-------

EV Charging Unit Testers

Multifunction Installation Tester with EV Testing Adaptor.....	42
---	----

Lease Finance Solutions	44-45
-------------------------------	-------



CREATING OPPORTUNITIES

Improving Lives

At CEF we aspire to be a leader in our sector, and a force for good,
with a focus on people, planet, and communities

OUR SUSTAINABILITY AND SOCIAL VALUE

achievements →



PLANETMARK CERTIFIED
for our carbon footprint and social value contributions



IN-HOUSE RECYCLING
we are the only electrical distributor to have an in-house recycling division – Waste Experts



OVER £790,000
committed to medical research into neurological disorders in the 12 months ending 30th April 2023



5 YEAR CHARITY PARTNERSHIP
launched with Macmillan Cancer Support



£1.4 MILLION DONATED
in volunteer time and donations in the 12 months ending 30th April 2023



OVER £314,000 RAISED
supporting the Electrical Industries Charity (EIC) in the 12 months ending 30th April 2023



OUR SUSTAINABILITY AND SOCIAL VALUE

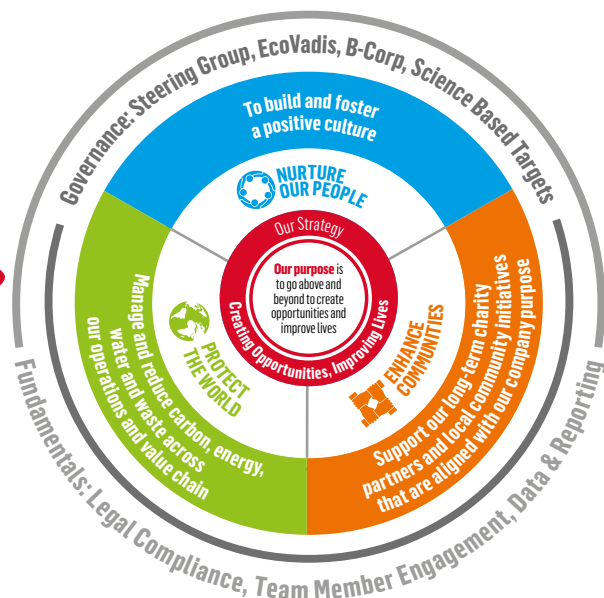
Strategy

“

Our sustainability and social value strategy "Creating Opportunities, Improving Lives" is the roadmap we are using to guide our progress. **At CEF we're committed to nurture our people, protect the world and enhance communities**, building a sustainable business that we can all continue to be proud of.

Connor Dalton,
Director of ESG & Sustainability

”



9.5W ESSENTIAL LED GLS LAMPS

- Suitable replacement for 60W filament lamps
- Finish: Opal
- Lamp life: 15,000 hrs



1 YEAR
GUARANTEE

FROM
£4.25
+VAT

Code	Cap	Lumens	1+	10+
Non-Dimmable – Warm White – 2700K				
2703-2164	BC / B22	900 lm	£4.25	£4.05
2703-2176	ES / E27	900 lm	£4.25	£4.05
Dimmable – Warm White – 2700K				
2703-2173	BC / B22	900 lm	£5.65	£5.25
2703-2185	ES / E27	900 lm	£5.65	£5.25

kgCO₂e SAVING

UP TO **156.80** OVER
TO **kgCO₂e** 15,000
hrs

YOU SAVE

UP TO **£212.10** OVER
TO **£** 15,000
hrs

ENERGY SAVING COMPARISON:
9.5W LED GLS vs 60W Incandescent

6W LED FILAMENT GLS LAMPS

- Suitable replacement for 40W filament lamps
- Finish: Clear
- Lamp life: 15,000 hrs



2 YEARS
GUARANTEE

FROM
£5.85
+VAT

Code	Cap	Lumens	1+	10+
Non-Dimmable – Warm White – 2700K				
1953-4174	BC / B22	810 lm	£5.85	£5.35
1953-4177	ES / E27	810 lm	£5.85	£5.35
Dimmable – Warm White – 2700K				
2057-0767	BC / B22	810 lm	£7.40	£7.10
2057-0770	ES / E27	810 lm	£7.40	£7.10

kgCO₂e SAVING

UP TO **105.57** OVER
TO **kgCO₂e** 15,000
hrs

YOU SAVE

UP TO **£142.80** OVER
TO **£** 15,000
hrs

ENERGY SAVING COMPARISON:
6W LED GLS vs 40W Incandescent

8.5W LED GLS LAMPS

- Suitable replacement for 60W filament lamps
- Finish: Opal
- Lamp life: 25,000 hrs



3 YEARS
GUARANTEE

FROM
£5.95
+VAT

Code	Cap	Lumens	1+	10+
Non-Dimmable – Warm White – 2700K				
2703-2023	BC / B22	810 lm	£5.95	£5.50
2703-2041	ES / E27	810 lm	£5.95	£5.50
Dimmable – Warm White – 2700K				
2703-2035	BC / B22	810 lm	£7.50	£6.95
2703-2053	ES / E27	810 lm	£7.50	£6.95

kgCO₂e SAVING

UP TO **266.51** OVER
TO **kgCO₂e** 25,000
hrs

YOU SAVE

UP TO **£360.50** OVER
TO **£** 25,000
hrs

ENERGY SAVING COMPARISON:
8.5W LED GLS vs 60W Incandescent

6W ESSENTIAL LED CANDLE LAMPS

- Suitable replacement for 40W filament lamps
- Finish: Opal
- Lamp life: 15,000 hrs



1 YEAR
GUARANTEE

FROM
£4.15
+VAT

Code	Cap	Lumens	1+	10+
Non-Dimmable – Warm White – 2700K				
2142-0949	SBC / B15	525 lm	£4.15	£3.85
2142-0943	BC / B22	525 lm	£4.15	£3.85
2142-0952	SES / E14	525 lm	£4.15	£3.85
2142-0946	ES / E27	525 lm	£4.15	£3.85
Dimmable – Warm White – 2700K				
2561-9173	BC / B22	525 lm	£5.25	£4.75
2561-9179	SES / E14	525 lm	£5.25	£4.75
2561-9176	ES / E27	525 lm	£5.25	£4.75

kgCO2e SAVING

UP
TO **105.57** OVER
15,000
kgCO2e hrs

YOU SAVE

UP
TO **£142.80** OVER
15,000
hrs

ENERGY SAVING COMPARISON:
6W LED Candle vs 40W Incandescent

4W LED FILAMENT CANDLE LAMPS

- Suitable replacement for 40W filament lamps
- Finish: Clear
- Lamp life: 15,000 hrs



2 YEARS
GUARANTEE

FROM
£3.75
+VAT

Code	Cap	Lumens	1+	10+
Non-Dimmable – Warm White – 2700K				
2703-2098	SBC / B15	470 lm	£3.75	£3.45
2703-2080	BC / B22	470 lm	£3.75	£3.45
2703-2107	SES / E14	470 lm	£3.75	£3.45
2703-2089	ES / E27	470 lm	£3.75	£3.45
Dimmable – Warm White – 2700K				
2703-2104	SBC / B15	470 lm	£5.50	£4.95
2703-2086	BC / B22	470 lm	£5.50	£4.95
2703-2113	SES / E14	470 lm	£5.50	£4.95
2703-2095	ES / E27	470 lm	£5.50	£4.95

kgCO2e SAVING

UP
TO **111.78** OVER
15,000
kgCO2e hrs

YOU SAVE

UP
TO **£151.20** OVER
15,000
hrs

ENERGY SAVING COMPARISON:
4W LED Candle vs 40W Incandescent

5W LED CANDLE LAMPS

- Suitable replacement for 40W filament lamps
- Finish: Opal
- Lamp life: 25,000 hrs



3 YEARS
GUARANTEE

FROM
£4.60
+VAT

Code	Cap	Lumens	1+	10+
Non-Dimmable – Warm White – 2700K				
1750-8178	SBC / B15	470 lm	£4.60	£4.25
1750-8166	BC / B22	470 lm	£4.60	£4.25
1750-8184	SES / E14	470 lm	£4.60	£4.25
1750-8172	ES / E27	470 lm	£4.60	£4.25
Dimmable – Warm White – 2700K				
1750-8181	SBC / B15	470 lm	£5.85	£5.35
1750-8169	BC / B22	470 lm	£5.85	£5.35
1750-8187	SES / E14	470 lm	£5.85	£5.35
1750-8175	ES / E27	470 lm	£5.85	£5.35

kgCO2e SAVING

UP
TO **181.13** OVER
25,000
kgCO2e hrs

YOU SAVE

UP
TO **£245.00** OVER
25,000
hrs

ENERGY SAVING COMPARISON:
5W LED Candle vs 40W Incandescent

5W ESSENTIAL LED GU10 LAMPS – PACK OF 10

- Suitable replacement for 50W halogen lamps
- Beam angle: 38°
- Lamp life: 20,000 hrs



2 YEARS
GUARANTEE

FROM
£19.95
+VAT

Code	Lumens	Colour Temp	Equivalent Price Each	1+
Non-Dimmable				
2388-1249	350 lm	Warm White – 3000K	£2.00	£19.95
2399-8585	350 lm	Cool White – 4000K	£2.00	£19.95
2399-8588	350 lm	Daylight – 6000K	£2.00	£19.95
Dimmable				
2629-6231	500 lm	Warm White – 3000K	£2.50	£24.95
2629-6225	500 lm	Cool White – 4000K	£2.50	£24.95
2629-6228	500 lm	Daylight – 6000K	£2.50	£24.95

kgCO₂e SAVING

UP TO **186.30** OVER
kgCO₂e 20,000
hrs

YOU SAVE

UP TO **£252.00** OVER
20,000
hrs

ENERGY SAVING COMPARISON:
5W LED GU10 vs 50W Halogen

5W LED GU10 LAMPS

- Suitable replacement for 50W halogen lamps
- Beam angle: 38°
- Lamp life: 25,000 hrs



3 YEARS
GUARANTEE

FROM
£3.30
+VAT

Code	Lumens	Colour Temp	1+	10+
Non-Dimmable				
2090-6851	500 lm	Warm White – 3000K	£3.30	£3.05
2090-6839	510 lm	Cool White – 4000K	£3.30	£3.05
2090-6845	520 lm	Daylight – 6000K	£3.30	£3.05
Dimmable				
2090-6854	500 lm	Warm White – 3000K	£5.50	£5.00
2090-6842	510 lm	Cool White – 4000K	£5.50	£5.00
2090-6848	520 lm	Daylight – 6000K	£5.50	£5.00

kgCO₂e SAVING

UP TO **232.88** OVER
kgCO₂e 25,000
hrs

YOU SAVE

UP TO **£315.00** OVER
25,000
hrs

ENERGY SAVING COMPARISON:
5W LED GU10 vs 50W Halogen



8W G24 LED LAMPS

- Suitable replacement for 18 and 26W compact fluorescent lamps
- Rotating end cap
- Lamp life: 25,000 hrs



2 Pin

4 Pin

3 YEARS
GUARANTEE

ONLY
£14.95
+VAT

Code	Cap	Length	Lumens	1+	10+
Non-Dimmable – Cool White – 4000K					
2275-5286	G24 2 Pin	145 mm	800 lm	£14.95	£14.50
2275-5325	G24 4 Pin	145 mm	800 lm	£14.95	£14.50

kgCO2e SAVING

UP
TO **124.20** OVER
kgCO2e 25,000
hrs

YOU SAVE

UP
TO **£168.00** OVER
25,000
hrs

ENERGY SAVING COMPARISON:

8W LED Compact vs 26W Compact & Control Gear (6W)

LED 2D LAMPS

- Suitable replacement for 16, 28 and 38W compact fluorescent 2D lamps
- Lamp life: 30,000 hrs



3 YEARS
GUARANTEE

FROM
£16.75
+VAT

Code	Wattage	Cap	Lumens	1+	10+
Non-Dimmable – Cool White – 4000K					
2123-0989	8W	GR8 2 Pin	800 lm	£16.75	£15.50
2123-0992	8W	GR10q 4 Pin	800 lm	£16.75	£15.50
2123-0980	14W	GR8 2 Pin	1400 lm	£19.95	£18.50
2123-0983	14W	GR10q 4 Pin	1400 lm	£19.95	£18.50
2123-0986	18W	GR10q 4 Pin	2000 lm	£24.50	£22.75

kgCO2e SAVING

UP
TO **186.30** OVER
kgCO2e 30,000
hrs

YOU SAVE

UP
TO **£252.00** OVER
30,000
hrs

ENERGY SAVING COMPARISON:

18W LED 2D vs 38W 2D & Control Gear (10W)

LED RETROFIT DISCHARGE LAMPS

- Suitable replacement for HID lamps
- Lamp life: 25,000 hrs



2448-1903



2448-1909



1414-1569

Code	Wattage	Cap	Beam Angle	Length	Ø	Lumens	Replacement For	1+
Non-Dimmable – Daylight – 6500K – Suitable for Bollards, Bulkheads and Lanterns								
1414-1569	11W	ES / E27	300°	165 mm	65 mm	1150 lm	70W HID	£42.95
2253-2830	15W	ES / E27	300°	165 mm	65 mm	1575 lm	70W HID	£46.50
Non-Dimmable – Daylight – 6000K – Suitable for Lowbays, Highbays, Floodlights and Lanterns								
2448-1897	20W	ES / E27	300°	178 mm	93 mm	2600 lm	70W HID	£43.95
2448-1903	30W	ES / E27	300°	188 mm	93 mm	3900 lm	70 - 150W HID	£54.95
2448-1900	30W	GES / E40	300°	208 mm	93 mm	3900 lm	70 - 150W HID	£54.95
2448-1906	60W	GES / E40	300°	280 mm	93 mm	8000 lm	250W HID	£65.95
2448-1909	85W	GES / E40	300°	285 mm	106 mm	11000 lm	250 - 400W HID	£79.95
2448-1891	100W	GES / E40	300°	288 mm	120 mm	13000 lm	250 - 400W HID	£88.95
2448-1894	120W	GES / E40	300°	308 mm	120 mm	15000 lm	400W HID	£103.95

**3 YEARS
GUARANTEE**

**FROM
£42.95
+VAT**

kgCO2e SAVING

UP TO 1,863.00 **OVER 25,000**
kgCO2e hrs

YOU SAVE

UP TO £2,520.00 **OVER 25,000**
hrs

ENERGY SAVING COMPARISON:
85W LED HID vs 400W HID & Control Gear [45W]

LED T8 GLASS TUBES

- Suitable replacement for fluorescent tubes
- Complete with LED starter for use in switch start retrofit installations
- Beam angle: 300°
- Lamp life: 25,000 hrs



3 YEARS
GUARANTEE

FROM
£6.75
+VAT

Code	Length	Wattage	Lumens	1+	5+
Non-Dimmable – Cool White – 4000K					
2096-0905	2 ft	9W	900 lm	£6.75	£6.15
2096-0911	3 ft	14W	1500 lm	£8.75	£7.95
2096-0923	4 ft	18W	1950 lm	£11.05	£10.25
2096-0932	5 ft	24W	2600 lm	£13.25	£12.25
2096-0938	6 ft	30W	3400 lm	£22.50	£21.50

kgCO₂e SAVING

UP TO **248.40** OVER
TO kgCO₂e 25,000
hrs

YOU SAVE

UP TO **£336.00** OVER
TO 25,000
hrs

LED T8 POLYCARBONATE TUBE

- Suitable replacement for fluorescent tubes
- Complete with LED starter for use in switch start retrofit installations
- Beam angle: 200°
- Lamp life: 25,000 hrs



3 YEARS
GUARANTEE

ONLY
£42.75
+VAT

Code	Length	Wattage	Lumens	1+	5+
Non-Dimmable – Cool White – 4000K					
1953-4204	8 ft	36W	3900 lm	£42.75	£39.95

ENERGY SAVING COMPARISON:

30W LED T8 Tube vs 70W T8 & Control Gear (8W)

LED T8 COLOUR SELECTABLE GLASS TUBES

- Suitable replacement for fluorescent tubes
- Selectable colour temperature: Warm white 3000K, cool white 4000K and daylight 6500K
- Complete with LED starter for use in switch start retrofit installations
- Beam angle: 300°
- Lamp life: 25,000 hrs



kgCO2e SAVING

UP TO **217.35** OVER 25,000 hrs
kgCO2e

YOU SAVE

UP TO **£294.00** OVER 25,000 hrs

ENERGY SAVING COMPARISON:

24W LED T8 CCT Tube vs 58W T8 & Control Gear (8W)

Code	Length	Wattage	Lumens	1+	5+
Non-Dimmable – Colour Selectable					
2772-8017	2 ft	9W	945 lm / 990 lm / 990 lm	£7.95	£7.50
2772-8020	3 ft	14W	1540 lm / 1680 lm / 1680 lm	£9.50	£8.95
2772-8023	4 ft	18W	1980 lm / 2160 lm / 2160 lm	£11.95	£11.50
2772-8026	5 ft	24W	2640 lm / 2880 lm / 2880 lm	£13.95	£12.95
2772-8029	6 ft	30W	3300 lm / 3600 lm / 3600 lm	£26.95	£25.95

NEW

3 YEARS GUARANTEE

FROM **£7.95** +VAT

LED T5 GLASS TUBES

- Suitable replacement for fluorescent tubes
- Beam angle: 200°
- Lamp life: 25,000 hrs



kgCO2e SAVING

UP TO **103.50** OVER 25,000 hrs
kgCO2e

YOU SAVE

UP TO **£140.00** OVER 25,000 hrs

ENERGY SAVING COMPARISON:

20W LED T5 Tube vs 35W T5 & Control Gear (5W)

Code	Length	Wattage	Lumens	1+	10+
Non-Dimmable – Cool White – 4000K					
2772-8041	2 ft	8W	880 lm	£9.75	£9.25
2772-8032	3 ft	12W	1320 lm	£9.25	£11.50
2772-8035	4 ft	16W	1760 lm	£13.50	£12.95
2772-8038	5 ft	20W	2200 lm	£15.50	£14.95

NEW

3 YEARS GUARANTEE

FROM **£9.75** +VAT

2W LED G4 CAPSULE LAMPS

- Suitable replacement for 10 and 20W halogen lamps
- Lamp life: 15,000 hrs
- Pack of 2



1 YEAR
GUARANTEE

ONLY
£9.25
+VAT

NEW

Code	Lumens	1+	10+
Non-Dimmable – Warm White – 3000K			
2196-2761	200 lm	£9.25	£8.75
Non-Dimmable – Cool White – 4000K			
2247-2401	200 lm	£9.25	£8.75

kgCO2e SAVING

UP
TO **55.89** OVER
kgCO2e 15,000
hrs

YOU SAVE

UP
TO **£75.60** OVER
15,000
hrs

ENERGY SAVING COMPARISON:

2W LED G4 vs 20W Halogen G4

3.3W LED G9 CAPSULE LAMPS

- Suitable replacement for 40W halogen lamps
- Lamp life: 15,000 hrs
- Pack of 2



1 YEAR
GUARANTEE

ONLY
£9.25
+VAT

NEW

Code	Lumens	1+	10+
Non-Dimmable – Warm White – 3000K			
2196-2764	350 lm	£9.25	£8.75
Non-Dimmable – Cool White – 4000K			
2247-2404	350 lm	£9.25	£8.75

kgCO2e SAVING

UP
TO **113.95** OVER
kgCO2e 15,000
hrs

YOU SAVE

UP
TO **£154.14** OVER
15,000
hrs

ENERGY SAVING COMPARISON:

3.3W LED G9 Vs 40W Halogen G9

GY6.35 LED CAPSULE LAMPS

- Suitable replacement for 35 and 50W halogen lamps
- Lamp life: 15,000 hrs



1 YEAR
GUARANTEE

FROM
£6.50
+VAT

NEW

Code	Wattage	Lumens	1+	10+
Non-Dimmable – Warm White – 2700K				
2786-2006	2.6W	300 lm	£6.50	£5.95
2786-2012	4W	470 lm	£7.25	£6.75
Non-Dimmable – Cool White – 4000K				
2786-2003	2.6W	300 lm	£6.50	£5.95
2786-2009	4W	470 lm	£7.25	£6.75

kgCO2e SAVING

UP
TO **142.83** OVER
kgCO2e 15,000
hrs

YOU SAVE

UP
TO **£193.20** OVER
15,000
hrs

ENERGY SAVING COMPARISON:

4W LED G4 vs 50W Halogen GY6.35

LED TRI-COLOUR BATTENS IP20

- Steel body with powder-coated finish
- Polycarbonate UV stabilised diffuser
- Quick-release access system
- Ideal retrofit option for existing T8 or T5 fixtures
- Integrated LED
- Colour temperature: Warm white 3000K, cool white 4000K and daylight 6500K
- Lamp life: 50,000 hrs
- Dimensions: 72 mm[W] x 72.5 mm[D]
- Mounted: Surface or suspended

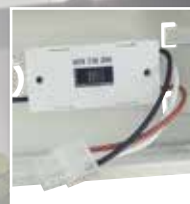
Microwave features:

- Detection angle [ceiling]: 360°
[wall]: 150°
- Detection range: 10 m
- Timer adjustment: 5 secs / 30 secs / 90 secs / 5 mins / 20 mins or 30 mins

Includes:

- Safety cords to LED tray

Code	Size	Wattage	Sensor	Lumens	Length	Price			
Standard									
2756-5063	2 ft	10W	-	1200 lm	600 mm	1+	£29.95	10+	£28.50
2756-5066	4 ft	20W	-	2400 lm	1200 mm	1+	£30.95	10+	£29.50
2756-5081	5 ft	30W	-	3600 lm	1500 mm	1+	£34.95	10+	£33.50
2756-5093	5 ft	30W	Microwave	3600 lm	1500 mm	1+	£53.95	10+	£51.95
2756-5111	6 ft	40W	-	4800 lm	1800 mm	1+	£44.95	10+	£43.50
Standard – High Output									
2756-5075	4 ft	40W	-	4800 lm	1200 mm	1+	£46.75	10+	£45.25
2756-5099	5 ft	60W	-	7200 lm	1500 mm	1+	£44.95	10+	£43.50
2756-5105	5 ft	60W	Microwave	7200 lm	1500 mm	1+	£74.95	10+	£72.95
2756-5117	6 ft	67W	-	8040 lm	1800 mm	1+	£63.50	10+	£61.95
3 hr Maintained Emergency									
2756-5072	4 ft	20W	-	2400 lm	1200 mm	1+	£74.95	3+	£72.95
2756-5087	5 ft	30W	-	3600 lm	1500 mm	1+	£79.95	3+	£77.95
2756-5096	5 ft	30W	Microwave	3600 lm	1500 mm	1+	£94.95	3+	£92.95
2756-5114	6 ft	40W	-	4800 lm	1800 mm	1+	£84.95	3+	£82.95
3 hr Maintained Emergency – High Output									
2756-5078	4 ft	40W	-	4800 lm	1200 mm	1+	£87.50	3+	£85.50
2756-5102	5 ft	60W	-	7200 lm	1500 mm	1+	£89.95	3+	£87.95
2756-5108	5 ft	60W	Microwave	7200 lm	1500 mm	1+	£109.95	3+	£107.95
2756-5120	6 ft	67W	-	8040 lm	1800 mm	1+	£99.95	3+	£97.95



Visit cef.co.uk for video demonstration

1 YEAR ON-SITE WARRANTY

5 YEARS GUARANTEE [2 YEARS EMERGENCY]

kgCO2e SAVING

UP TO 372.60 OVER 50,000 hrs

YOU SAVE

UP TO £504.00 OVER 50,000 hrs

ENERGY SAVING COMPARISON: 30W LED Batten vs 58W T8 Fluorescent Lamp & Control Gear [8W]

FROM £29.95 +VAT

LED NON-CORROSIVE FITTINGS IP65

- Polycarbonate body and purpose-designed opal diffuser
- Integrated LED
- Colour temperature: Cool white 4000K
- Lamp life: 50,000 hrs
- Mounted: Surface or suspended

Includes:

- Stainless steel fixing clips
- Gear tray extension cords

Code	Size	Wattage	Lumens	Length	Width	Depth	1+	10+
Standard								
2613-7831	2 ft	9W	1100 lm	600 mm	96 mm	79 mm	£29.50	£27.95
2613-7894	4 ft	18W	2200 lm	1200 mm	96 mm	79 mm	£35.50	£33.95
2613-7846	5 ft	23W	2800 lm	1500 mm	96 mm	79 mm	£39.50	£37.95
2613-7858	6 ft	27W	3200 lm	1800 mm	96 mm	83 mm	£49.95	£48.50
Standard – High Output								
2613-7834	2 ft	18W	2200 lm	600 mm	96 mm	79 mm	£34.95	£33.25
2613-7840	4 ft	40W	4800 lm	1200 mm	96 mm	79 mm	£44.25	£42.50
2613-7852	5 ft	48W	5800 lm	1500 mm	96 mm	79 mm	£47.50	£45.75
2613-7864	6 ft	55W	6600 lm	1800 mm	96 mm	83 mm	£69.50	£67.75
Standard – Microwave Sensor								
2726-9278	5 ft	23W	2800 lm	1500 mm	96 mm	79 mm	£51.50	£49.95
2726-9272	5 ft	48W	5800 lm	1500 mm	96 mm	79 mm	£64.50	£62.75
Code	Size	Wattage	Lumens	Length	Width	Depth	1+	3+
3 hr Maintained Emergency								
2613-7837	4 ft	18W	2200 lm	1200 mm	96 mm	79 mm	£78.95	£76.95
2613-7849	5 ft	23W	2800 lm	1500 mm	96 mm	79 mm	£89.95	£87.95
2613-7861	6 ft	27W	3200 lm	1800 mm	96 mm	83 mm	£99.95	£97.95
3 hr Maintained Emergency – High Output								
2613-7843	4 ft	40W	4800 lm	1200 mm	96 mm	79 mm	£88.95	£86.50
2613-7855	5 ft	48W	5800 lm	1500 mm	96 mm	79 mm	£99.95	£97.50
2613-7867	6 ft	55W	6600 lm	1800 mm	96 mm	83 mm	£109.95	£107.50
3 hr Maintained Emergency – Microwave Sensor								
2726-9281	5 ft	23W	2800 lm	1500 mm	96 mm	79 mm	£113.95	£109.95
2726-9275	5 ft	48W	5800 lm	1500 mm	96 mm	79 mm	£137.50	£133.50

Microwave features:

- Detection angle [ceiling]: 360°
[wall]: 150°
- Detection range: 10 m
- Timer adjustment: 5 secs, 30 secs,
90 secs, 5 mins, 20 mins or 30 mins



Visit cef.co.uk for
video demonstration



**1 YEAR
ON-SITE
WARRANTY**

**5 YEARS
GUARANTEE
[2 YEARS
EMERGENCY]**

kgCO2e SAVING

UP TO 972.90 OVER 50,000 hrs
kgCO2e

YOU SAVE

UP TO £1,316.00 OVER 50,000 hrs

ENERGY SAVING COMPARISON:

48W LED Non Corrosive vs 2 x 58W T8
Fluorescent Lamps & Control Gear [26W]

**FROM
£29.50 +VAT**

LED LINEAR VAPOUR PROOF FITTINGS IP65

- Slim extruded single-piece polycarbonate body and opal diffuser
- Integrated LED
- Colour temperature: Cool white 4000K
- Lamp life: 25,000 hrs
- Dimensions: 53 mm[W] x 35 mm[D]
- Mounted: Surface or suspended



2 YEARS
GUARANTEE

Includes:

- Stainless steel fixing clips
- Entry gland
- Quick-fit terminals



Visit cef.co.uk for
video demonstration

FROM
£23.75
+VAT

Code	Size	Wattage	Lumens	Length	1+	10+
Single						
2607-5575	4 ft	36W	3600 lm	1261 mm	£23.75	£22.75
2607-5578	5 ft	45W	4500 lm	1541 mm	£27.95	£26.95
2607-5581	6 ft	60W	6000 lm	1841 mm	£42.50	£41.50

kgCO2e SAVING

UP TO **93.15** OVER
kgCO2e 25,000
hrs

YOU SAVE

UP TO **£126.00** OVER
£ 25,000
hrs

ENERGY SAVING COMPARISON:

60W LED Vapour Proof Vs 70w T8 Fluorescent Lamp & Control Gear (8W)

5.5W LED FIRE RATED TRI-COLOUR DOWNLIGHT IP65

- Range: LED FRD
- Selectable colour temperature: Warm white 3000K, cool white 4000K and daylight 6000K
- Colour selectable via switch located underneath the bezel
- Lumen output: 450 lm / 500 lm / 500 lm
- Integral driver and separate prewired loop in / out plug-and-play connector
- Dimmable
- Fire rated: 30, 60 and 90 mins
- Lamp life: 25,000 hrs



Terminal block included



3 YEARS
GUARANTEE

ONLY
£16.50
+VAT



Visit cef.co.uk for
video demonstration

Code	Finish	Beam Angle	Depth	Ø	Cut Out Ø	1+	10+
Bezel Included							
2743-9417	White	60°	56 mm	87 mm	70 - 75 mm	£16.50	£15.95

kgCO2e SAVING

UP TO **230.29** OVER
kgCO2e 25,000
hrs

YOU SAVE

UP TO **£311.50** OVER
£ 25,000
hrs

ENERGY SAVING COMPARISON:

5.5W LED Downlight vs 50W Halogen

4.5W / 5.5W / 7.5W LED FIRE RATED TRI-COLOUR DOWNLIGHT IP65

- Range: LED FRD
- Selectable colour temperature: Warm white 3000K, cool white 4000K and daylight 6500K
- Colour selectable via switch located underneath the bezel
- Wattage selectable via switch located on the integral driver
- Lumen output [4.5W]: 400 lm / 430 lm / 400 lm
[5.5W]: 500 lm / 550 lm / 500 lm
[7.5W]: 600 lm / 700 lm / 600 lm
- Integral driver and separate prewired loop in / out plug-and-play connector
- Dimmable
- Fire rated: 30, 60 and 90 mins
- Lamp life: 30,000 hrs



Terminal block included

**5 YEARS
GUARANTEE**

kgCO2e SAVING

UP TO 276.35 OVER 30,000 hrs
kgCO2e

YOU SAVE

UP TO £373.80 OVER 30,000 hrs

ENERGY SAVING COMPARISON:

5.5W LED Downlight vs 50W Halogen



Visit cef.co.uk for video demonstration



CCT COLOUR SELECT



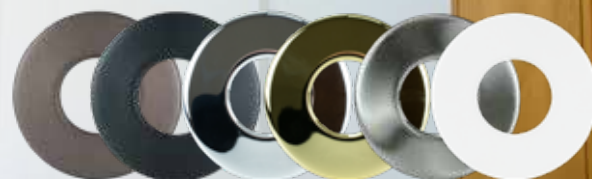
**ONLY
£19.95** +VAT

Code	Finish	Beam Angle	Depth	Ø	Cut Out Ø	1+	10+
Bezel Included							
2743-9414	White	60°	56 mm	87 mm	70 - 75 mm	£19.95	£19.50

ALSO AVAILABLE...

- Metal bezels for use with Fusion downlights – [2743-9417] and [2743-9414] only

Code	Finish	1+	10+	Code	Finish	1+	10+
2743-9093	Anthracite	£2.95	£2.75	2743-9102	Polished Brass	£2.95	£2.75
2743-9096	Black	£2.95	£2.75	2743-9105	Satin Nickel	£2.95	£2.75
2743-9099	Chrome	£2.95	£2.75	2743-9108	White	£2.95	£2.75



LED LOW PROFILE COMMERCIAL DOWNLIGHTS IP20

- Low profile recessed downlight with opal polycarbonate diffuser
- Ideal replacement for existing CFL fixtures
- Mounted: Recessed
- Lamp life: 25,000 hrs



Includes:

- Plug-and-play driver

Code	Wattage	Lumens	Depth	Ø	Cut Out Ø	1+	10+
Cool White - 4000K							
2634-4567	6W	450 lm	21 mm	128 mm	115 mm	£10.50	£9.95
2634-4558	12W	900 lm	21 mm	170 mm	150 mm	£14.25	£13.75
2634-4561	18W	1600 lm	21 mm	229 mm	210 mm	£16.95	£16.25
2634-4564	24W	1900 lm	21 mm	298 mm	280 mm	£26.95	£26.25

kgCO₂e SAVING

UP TO **238.05** OVER 25,000 hrs
kgCO₂e

YOU SAVE

UP TO **£322.00** OVER 25,000 hrs

ENERGY SAVING COMPARISON:

18W LED Downlight vs 2 x 26W Compact & Control Gear [12W]

2 YEARS
GUARANTEE

FROM
£10.50 +VAT

36W BACKLIT LED TP[a] PANELS IP20

- Aluminium body with low glare opal polycarbonate TP[a] diffuser
- Mounted: Recessed
- Lamp life: 50,000 hrs



Includes:

- Plug-and-play driver

Code	Lumens	Length	Width	Depth	1+	10+
Non-Dimmable – Warm White – 3000K						
2676-5536	3820 lm	595 mm	595 mm	34 mm	£25.95	£24.95
Non-Dimmable – Cool White – 4000K						
2676-5530	3820 lm	595 mm	595 mm	34 mm	£25.95	£24.95
Non-Dimmable – Daylight – 6500K						
2676-5533	3820 lm	595 mm	595 mm	34 mm	£25.95	£24.95

kgCO2e SAVING

UP TO 538.20 kgCO2e **OVER 50,000 hrs**

YOU SAVE

UP TO £728.00 **OVER 50,000 hrs**

ENERGY SAVING COMPARISON:

36W LED Panel Vs 4x18W Fluorescent Lamps & Control Gear (16W)

**1 YEAR
ON-SITE
GUARANTEE**

**5 YEARS
GUARANTEE**

**ONLY
£25.95** +VAT

12W / 16W KLIP LED TRI-COLOUR BULKHEADS IP65

- LED Bulkhead with opal diffuser
- Selectable colour temperature:
Warm white 3000K, cool white 4000K or daylight 6500K
- Switch located on the driver takes the fitting down to 12W for increased energy savings
- Lumen output [12W]: 1,200 - 1,300 lm
[16W]: 1,600 - 1,700 lm
- Lamp life: 30,000 hrs

Microwave features:

- Detection angle: 360°
- Detection range: 12 m
- Timer adjustment: 0 - 20 mins

Includes:

- Standard white bezel

Code	Sensor	Depth	Ø	Price			
Standard							
2704-3168	No	95 mm	340 mm	1+	£28.95	5+	£27.50
2704-3174	Microwave	95 mm	340 mm	1+	£46.95	5+	£44.95
3 hr Maintained Emergency							
2704-3171	No	95 mm	340 mm	1+	£48.50	3+	£46.95
2704-3177	Microwave	95 mm	340 mm	1+	£64.95	3+	£62.95



Visit cef.co.uk for video demonstration



**1 YEAR
ON-SITE
WARRANTY**

**5 YEARS
GUARANTEE
[2 YEARS
EMERGENCY]**

kgCO2e SAVING

UP TO 111.78 OVER
TO **kgCO2e** 30,000
hrs

YOU SAVE

UP TO £151.20 OVER
TO **£** 30,000
hrs

ENERGY SAVING COMPARISON:

16W LED Bulkhead vs 28W 2D & Control Gear (6W) 16W LED Bulkhead vs 28W 2D & Control Gear (6W)

FROM
£28.95 +VAT

20W TRI-COLOUR LED WALL PACKS IP65

- Die-cast aluminium body and polycarbonate diffuser
- Push-fit connectors for easy installation
- Integrated LED
- Selectable colour temperature: Warm white 3000K, cool white 4000K or daylight 6500K
- Lumen output: 1,500, 1,600 or 1,550 lm
- Lamp life: 50,000 hrs



Visit cef.co.uk for
video demonstration

Code	Sensor	Height	Width	Depth	1+	3+
2641-1884	No	221 mm	207 mm	82 mm	£76.75	£72.75
2641-1887	Photocell	221 mm	207 mm	82 mm	£85.75	£81.75

kgCO2e SAVING

UP TO **683.10** kgCO2e OVER 50,000 hrs

YOU SAVE

UP TO **£924.00** OVER 50,000 hrs

ENERGY SAVING COMPARISON:

20W LED Wall Pack vs 70W Discharge Lamp & Control Gear [16W]



**1 YEAR
ON-SITE
GUARANTEE**

**5 YEARS
GUARANTEE**

**FROM
£76.75^{+VAT}**

GUARDIAN LED FLOODLIGHTS IP65

- Die-cast aluminium powder-coated body
- Integrated LED
- Colour temperature: Cool white 4000K
- Lamp life: 50,000 hrs

PIR Features:

- Detection angle: 120°
- Detection range: Up to 10 m
- Timer adjustment: 10 secs - 7 mins

Includes:

- Adjustable bracket
- 1 m Cable



Visit cef.co.uk for
video demonstration



Code	Wattage	Lumens	Height	Width	Depth	1+	3+
Standard							
2672-6707	15W	1950 lm	188 mm	129 mm	34 mm	£23.75	£22.75
2672-6719	30W	3900 lm	238 mm	173 mm	42 mm	£36.75	£34.75
2672-6728	50W	6500 lm	250 mm	188 mm	42 mm	£55.50	£51.95
2672-6734	80W	10400 lm	302 mm	250 mm	52 mm	£110.25	£104.95
2672-6704	100W	13000 lm	358 mm	279 mm	57 mm	£124.95	£119.50
2672-6710	150W	19500 lm	405 mm	329 mm	62 mm	£152.25	£145.75
2672-6716	250W	32500 lm	471 mm	401 mm	62 mm	£238.95	£232.50
PIR							
2672-6713	15W	1950 lm	250 mm	129 mm	51 mm	£32.50	£31.50
2672-6722	30W	3900 lm	303 mm	173 mm	53 mm	£43.50	£41.50
2672-6731	50W	6500 lm	315 mm	188 mm	54 mm	£66.95	£61.50

kgCO2e SAVING

UP TO 4,657.50 OVER
kgCO2e 50,000
hrs

YOU SAVE

UP TO £6,300.00 OVER
50,000
hrs

ENERGY SAVING COMPARISON:

50W LED Floodlight vs 500W Tungsten Halogen Lamp

**1 YEAR
ON-SITE
GUARANTEE**

**5 YEARS
GUARANTEE**

**FROM
£23.75
+VAT**

6W SOLAR-POWERED LED SECURITY
TWINSPOT WITH PIR IP44

- Energy-saving, solar-powered security twinspace
- Integrated LED
- Colour temperature: Daylight 6500K
- Lumen output: 270 lm
- Lamp life: 30,000 hrs

PIR Features:

- Detection angle: 130°
- Detection range: 8 m
- Timer adjustment: 10 secs - 1 min

Includes:

- Solar panel with 5 m lead

3 YEARS
GUARANTEE

ONLY
£45.95
+VAT

Code	Height	Width	Depth	1+	3+
2092-6510	189 mm	334 mm	120 mm	£45.95	£44.50

6W SOLAR-POWERED LED FLOODLIGHT
WITH PIR IP44

- Energy-saving, solar-powered floodlight
- Polycarbonate body
- Integrated LED
- Colour temperature: Daylight 6000K
- Lumen output: 480 lm
- Lamp life: 30,000 hrs

PIR Features:

- Detection angle: 130°
- Detection range: 8 m
- Timer adjustment: 10 secs - 1 min

Includes:

- Solar panel with 5 m lead

1 YEAR
GUARANTEE

ONLY
£32.95
+VAT

Code	Height	Width	Depth	1+	3+
2261-4100	203 mm	210 mm	219 mm	£32.95	£31.50

2W LED SOLAR-POWERED WALL LIGHT WITH PIR IP44

- Energy-saving, solar-powered wall light
- Polycarbonate body
- Colour temperature: Daylight 5000K
- Lumen output: 240 lm

PIR Features:

- Detection angle: 90°
- Detection range: 7 m
- Timer: 60 secs



1 YEAR
GUARANTEE

ONLY
£32.95
+VAT

Code	Height	Width	Depth	1+	3+
2613-8182	101 mm	143 mm	121 mm	£32.95	£31.50

LED Highbay Fittings IP65

- Ideal for replacement of SON or metal halide highbays
- Die-cast aluminium housing with integral driver and polycarbonate lens
- 1 - 10V Dimming as standard
- Beam angle: 120°
- Colour temperature: Cool white 4000K
- Lamp life: 50,000 hrs

Includes:

- 1 m Cable

Code	Wattage	Lumens	Height	Ø	1+	10+
2681-1316	100W	14000 lm	159 mm	280 mm	£122.95	£120.95
2681-1319	150W	21000 lm	159 mm	280 mm	£123.95	£121.95
2681-1322	200W	28000 lm	169 mm	330 mm	£168.95	£166.95
2681-1325	240W	33600 lm	169 mm	330 mm	£179.95	£177.95

Code	Suitable For	Beam Angle	1+	10+
Aluminium Reflector				
2681-1352	100W and 150W	90°	£24.75	£24.25
2681-1337	200W and 240W	90°	£33.75	£32.75

Polycarbonate Lens				
2681-1346	100W and 150W	90°	£13.75	£13.25
2681-1331	200W and 240W	90°	£14.25	£13.25

Polycarbonate Reflector				
2681-1349	100W and 150W	-	£44.95	£44.50
2681-1334	200W and 240W	-	£46.50	£45.50

Mounting Bracket				
2681-1343	100W and 150W	-	£12.75	£12.25
2681-1328	200W and 240W	-	£17.50	£16.50

Code	Description	1+	3+
2681-1340	Microwave Sensor	£29.95	£28.50
2604-1012	Remote Control for Microwave Sensor	£29.95	£28.50



Aluminium Reflector



Polycarbonate Lens



Polycarbonate Reflector



Mounting Bracket



Microwave Sensor



Remote Control

**1 YEAR
ON-SITE
GUARANTEE**

**5 YEARS
GUARANTEE**

kgCO2e SAVING

UP TO 3,053.25 OVER
TO **kgCO2e** 50,000
hrs

YOU SAVE

UP TO £4,130.00 OVER
TO **£50,000**
hrs



Visit cef.co.uk for
video demonstration

ENERGY SAVING COMPARISON:

150W LED Highbay vs 400W Discharge Lamp & Control Gear [45W]

FROM
£122.95 +VAT

WALL / CEILING MOUNTED PIRs IP44

- Auto override
- Detection angle: 180°
- Detection range: 12 m
- Timer adjustment:
10 secs - 10 mins



Load rating:

- Max. 1,000W [4A] Incandescent lamps
- Max. 200W [0.8A] LED Lamps [up to six lamps]

1 YEAR
GUARANTEE

ONLY
£17.75
+VAT

Code	Colour	Height	Width	Projection	1+	3+
1249-4044	Black	80 mm	70 mm	125 mm	£17.75	£16.95
1249-4047	White	80 mm	70 mm	125 mm	£17.75	£16.95

WALL MOUNTED PIRs IP44

- Adjustable sensitivity, time and lux
- Lux adjustment: 3 - 2,000 lx
- Detection angle: 180°
- Detection range: 12 m
- Timer adjustment:
10 secs - 15 mins
- Mounted: Wall



Load rating:

- Max. 1,200W [5A] Incandescent lamps
- Max. 300W [1.25A] LED Lamps [up to six lamps]

1 YEAR
GUARANTEE

ONLY
£10.95
+VAT

Code	Colour	Height	Width	Projection	1+	3+
2543-0164	Black	120 mm	78 mm	52 mm	£10.95	£10.25
2543-0167	White	120 mm	78 mm	52 mm	£10.95	£10.25

WALL / CEILING MOUNTED PIRs IP55

- Adjustable detector head and lux
- Supplied with lens shield
- Detection angle: 45 - 360°
- Detection range: 16 m
- Timer adjustment:
5 secs - 15 mins
- Mounted: Wall, ceiling or corner



Load rating:

- Max. 2,200W [9A] Incandescent lamps
- Max. 200W [0.8A] LED Lamps

1 YEAR
GUARANTEE

ONLY
£30.50
+VAT

Code	Colour	Height	Width	Projection	1+	3+
2613-8074	Black	147 mm	88 mm	50 mm	£30.50	£28.50
2613-8071	White	147 mm	88 mm	50 mm	£30.50	£28.50

WALL / CEILING MOUNTED PIRs IP55

- Adjustable sensitivity, time and lux
- Supplied with lens shield
- Detection angle: 240°
- Detection range: 4 - 12 m
- Timer adjustment: 1 - 20 mins
- Mounted: Wall, ceiling or corner



Load rating:

- Max. 2,000W [8A] Incandescent lamps
- Max. 400W [1.6A] LED Lamps

1 YEAR
GUARANTEE

ONLY
£33.50
+VAT

Code	Colour	Height	Width	Projection	1+	3+
2613-8179	Black	74 mm	72 mm	133.6 mm	£33.50	£31.50
2613-8176	White	74 mm	72 mm	133.6 mm	£33.50	£31.50

WALL / CEILING MOUNTED PIRs IP65

- Remote control included to adjust lux, range and timer
- Lux adjustment: 3 - 2,000 lx
- Detection angle: 180°
- Detection range: 12 m
- Timer adjustment: 3 secs - 30 mins



Included

Load rating:

- Max. 1,200W [5A] Incandescent lamps
- Max. 300W [1.25A] LED Lamps

1 YEAR
GUARANTEE

ONLY
£18.50
+VAT

Code	Colour	Height	Width	Projection	1+	3+
2364-1459	Black	52 mm	80 mm	120 mm	£18.50	£17.75
2364-1456	White	52 mm	80 mm	120 mm	£18.50	£17.75

LONG DISTANCE WALL / CEILING MOUNTED PIRs IP54

- Adjustable sensitivity, time and lux
- Lux adjustment: 10 - 2,000 lx
- Detection angle: 270°
- Detection range: 18 m
- Timer adjustment: 5 secs - 4 mins



Load rating:

- Max. 2,000W [8A] Incandescent lamps
- Max. 250W [1A] LED Lamps

1 YEAR
GUARANTEE

ONLY
£46.50
+VAT

Code	Colour	Height	Width	Projection	1+	3+
2543-0146	Black	86 mm	96 mm	137 mm	£46.50	£44.95
2543-0149	White	86 mm	96 mm	137 mm	£46.50	£44.95

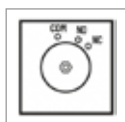
COLUMBUS® PNEUMATIC TIME LAG SWITCH

- No neutral required
- Timer adjustment: 5 secs - 5 mins
- BS EN 60669-1:2000 and BS EN 60669-2-3:2006 [Ed 4]



Load rating:

- 1,440W [6A] Incandescent lamps and resistive loads
- 720W [3A] LED Lamps



3 YEARS
GUARANTEE

ONLY
£24.50
+VAT

Code	Configuration	No. of Wire Connections	1+	3+
0003-7666	Single Contact	3	£24.50	£23.50

16A PUSHBUTTON TIME LAG SWITCH

- Compatible with any two or three wire activator switches
- Illuminated blue locator ring requires three wire connections to activator switch
- Time cancellation function
- Timer adjustment: 2 mins - 2 hrs



3 YEARS
GUARANTEE

ONLY
£24.95
+VAT

Code	Configuration	No. of Wire Connections	1+	3+
0704-0071	Secondary	2	£24.95	£23.95

16A PUSHBUTTON TIME LAG SWITCHES

- Activator switch – can be interlinked with any Elkay secondary switches [only one activator per circuit]
- Suitable for incandescent and fluorescent lamps and resistive loads
- Illuminated blue locator ring
- One minute countdown LED indicator
- Requires capacitor [1865-9914] for all types of low wattage loads including LED lighting [sold separately – page 29]
- Concealed fixing screws
- Timer adjustment: 2 mins - 2 hrs



2 WIRE
3 YEARS
GUARANTEE

3 WIRE
6 YEARS
GUARANTEE

FROM
£43.50
+VAT

Code	Configuration	No. of Wire Connections	1+	3+
0704-0065	Activator	2	£43.95	£42.95
0704-0113	Activator	3	£43.50	£42.50

16A PIR TIME LAG SWITCH

- Suitable for lighting, heating, ventilation systems and contactor coils
- Neutral required
- Illuminated blue locator ring
- Lux level control
- Detection angle: 360°
- Detection range: 5 - 7 m
- Requires capacitor [1865-9914] for all types of low wattage loads including LED lighting [sold separately – page 29]
- Concealed fixing screws
- Timer adjustment: 2 mins - 2 hrs



6 YEARS
GUARANTEE

ONLY
£83.95
+VAT

Code	No. of Wire Connections	1+	3+
0704-0089	3	£83.95	£81.75

16A TWO WIRE PIRs

- No neutral required
- Please note: Capacitor [1865-9914] will often be required when switching certain types of loads
- Detection angle: 360°
- Detection range: 5 - 7 m
- Timer adjustment: 2 mins - 2 hrs
- BS EN 60669-2-3:2006



3 YEARS
GUARANTEE

FROM
£35.95
+VAT

Code	Description	Height	Width	Depth	1+	3+
0704-0101	Two Wire	85 mm	85 mm	8 mm	£71.95	£70.50
0704-0107	Secondary	85 mm	85 mm	8 mm	£35.95	£34.50

16A THREE WIRE PIR IP66

- Please note: Capacitor [1865-9914] will often be required when switching certain types of loads
- Detection angle: 360°
- Detection range: 5 - 7 m
- Timer adjustment: 2 mins - 2 hrs



6 YEARS
GUARANTEE

ONLY
£86.50
+VAT

Includes:

- Surface mounting box

Code	Height	Width	Depth	1+	3+
0704-0161	85 mm	85 mm	65 mm	£86.50	£84.95

16A MICROWAVE SENSOR

- Suitable for all lighting types
- Switch with lux level sensing
- Please note: Capacitor [1865-9914] will often be required when switching certain types of loads
- Mounting height: 1.2 - 2.5 m
- Detection range: 30 m
- Timer adjustment: 2 mins - 2 hrs
- Clip-on front cover conceals screws

Code	1+	3+
1019-6221	£59.95	£58.50

16A WEATHERPROOF PUSHBUTTON TIME LAG SWITCH IP66

- Activator switch – can be interlinked with any Elkay secondary switches [only one activator per circuit]
- Commonly used for outdoor patio or infrared heaters and where there is a neutral to control all load types of lighting
- Illuminated blue locator ring
- One minute countdown LED indicator
- Includes backbox with M20 knockouts
- Timer adjustment: 2 mins - 2 hrs



6 YEARS
GUARANTEE

ONLY
£51.95
+VAT

Code	No. of Wire Connections	1+	3+
0704-0125	3	£51.95	£50.75

6A THREE WIRE CEILING PIR

- Neutral required
- Multiple PIRs can be interlinked to cover large areas
- Please note: Capacitor [1865-9914] will often be required when switching certain types of loads
- Mounting height: 2.4 m
- Detection angle: 360°
- Detection range: 7 m
- Timer adjustment: 30 secs - 30 mins



3 YEARS
GUARANTEE

ONLY
£16.50
+VAT

Code	Depth	Ø	Cut Out Ø	1+	3+
2639-5630	90 mm	90 mm	64 mm	£16.50	£14.95

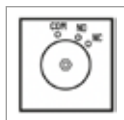


6 YEARS
GUARANTEE

ONLY
£59.95
+VAT

TIME LAG SWITCHES

- Saves cost and energy by automatically switching off the light after a preset period of time
- Replaces existing lighting control
- Timer must be set before installation
- No neutral required
- Requires 25 mm backbox
- BS EN 60669



1865-9917



1865-9911



3 YEARS
GUARANTEE

FROM
£25.60
+VAT

Code	Timer Adjustment	Current Rating	No. of Wire Connections	1+	3+
Pneumatic					
1865-9917	5 secs - 5 mins	6A Incandescent - 3A Fluorescent	3	£25.60	£24.75
Electronic					
1865-9911	20 secs - 25 mins	5A Incandescent - 3A Fluorescent	2	£35.50	£34.50

10A TIME LAG SWITCHES

- Suitable for resistive loads and incandescent, fluorescent, CFL and LED lamps
- Requires 25 mm backbox
- Capacitor will often be required when switching certain types of loads – sold separately [1865-9914]
- Timer adjustment: 2 - 60 mins
- BS EN 60669



Pushbutton



PIR

PIR Features:

- Detection angle: 100°
- Detection range: 7 m

2 WIRE
3 YEARS
GUARANTEE

3 WIRE
6 YEARS
GUARANTEE

FROM
£34.95
+VAT

Code	Type	No. of Wire Connections	1+	3+
1865-9890	Pushbutton	2	£34.95	£33.75
1865-9899	Pushbutton	3	£42.35	£40.75
1865-9896	PIR	2	£71.50	£68.75
1865-9905	PIR	3	£59.50	£57.25

10A CEILING PIR

- Neutral required
- Please note: Capacitor will often be required when switching certain types of loads – sold separately [1865-9914]
- Lux and sensitivity adjustment
- Mounting height: 2.4 m
- Detection angle: 360°
- Detection range: 7 m
- Timer adjustment: 2 mins - 1 hr
- BS EN 60669



Includes:

- White and chrome interchangeable bezels
- Surface mounting backbox

6 YEARS
GUARANTEE

ONLY
£40.95
+VAT

Code	Depth	Ø	Cut Out Ø	1+	3+
1865-9908	70 mm	77 mm	64 mm	£40.95	£39.95

POWER FACTOR CORRECTION CAPACITOR

- Designed to assist with the switching of electronic timers when using low wattage lighting
- Suitable for use with 2D fittings, energy-saving lamps, LEDs or any low power consuming load
- Can also be used with contactors to assist in the switching of loads above 16A when using electronic timers
- Ideal for use with two and three wire switches
- Suitable for all AC voltages below 400V
- 4 Microfarad capacitance [4µf]
- EN 60252



6 YEARS
GUARANTEE

ONLY
£7.45
+VAT

Code	1+	3+
1865-9914	£7.45	£7.25

DESIGNER XR ELECTRIC RADIATORS

Stylish, electronic radiators featuring a built-in, state-of-the-art, energy management and control system based on an integrated range of technical features.

- Built-in digital programmer with seven heating schedules, plus one bespoke option
- 150W Per fin for faster heat up time
- High-precision chrono thermostat controls temperature to within $\pm 0.2^{\circ}\text{C}$
- Open window technology
- Adaptive start: Anticipatory control
- Three temperature settings: Comfort, economy and anti-freeze
- Tamper-proof lock-off facility
- Thermal safety limiter: 75°C Maximum surface temperature
- Mounted: Wall
- IP24
- Complies with Lot 20
- IEC 62233:2005



Buy, Fit
& Earn!
in 5 easy steps

Haverland Loyalty Scheme

SIGN UP FOR THE HAVERLAND LEAGUE AND EARN EXTRA CASH!



SIGN UP FOR THE HAVERLAND LEAGUE AND EARN REWARDS!

FIND THE FULL HAVERLAND RANGE AT CEF.CO.UK OR ASK IN-BRANCH

Get your prepaid Mastercard in five easy steps:

- 1 Buy Haverland products
- 2 Register at haverland-league.co.uk
- 3 Go to the "make a claim" page
- 4 Put in all the purchase details and don't forget to upload your proof of purchase!
- 5 Wait for your purchase to be approved

Includes:

- Wall bracket
- 1.5 m Cable

Code	Power Rating	Height	Width	Depth	1+	3+
2728-2193	500W	590 mm	345 mm	100 mm	£229.95	£224.95
2728-2196	750W	590 mm	525 mm	100 mm	£274.95	£269.95
2728-2181	1 kW	590 mm	605 mm	100 mm	£314.95	£309.95
2728-2184	1.2 kW	590 mm	765 mm	100 mm	£359.95	£354.95
2728-2187	1.5 kW	590 mm	845 mm	100 mm	£409.95	£404.95
2728-2190	1.8 kW	590 mm	1005 mm	100 mm	£449.95	£444.95

**3 YEARS
ELECTRICAL
GUARANTEE**

**10 YEARS
RADIATOR
BLOCK SEAL
GUARANTEE**

**FROM
£229.95
+VAT**

STORAGE HEATERS

- Controllable electronic heat to match user lifestyle
- High-density cells dynamically store energy using less space than other storage heaters
- Seven day electronic timer with electronic thermostat
- Dynamic efficiency+ technology accurate to $\pm 0.2^{\circ}\text{C}$
- Uses off-peak and peak tariffs [requires two supplies]
- Open window technology
- Slimline design
- Free 3D AutoCAD heating design scheme service
[details on page 1202 of CEF Catalogue Issue 14]
- Mounted: Floor [secured to wall]
- IPX4
- Complies with Lot 20



Includes:

- Wall bracket
- Support feet
- High-density bonded magnetite energy cell packs

Code	Power Rating	Height	Width	Depth	1+	3+
2297-0182	500W	749 mm	581 mm	182 mm	£519.95	£514.95
2297-0317	750W	749 mm	703 mm	182 mm	£564.95	£559.95
2297-0320	1 kW	749 mm	825 mm	182 mm	£629.95	£619.95
2297-0323	1.25 kW	749 mm	947 mm	182 mm	£694.95	£684.95
2297-0326	1.5 kW	749 mm	1069 mm	182 mm	£764.95	£754.95



Visit cef.co.uk for
video demonstration

**2 YEARS
ON-SITE
GUARANTEE**

**10 YEARS
GUARANTEE
ON REGISTRATION**

FROM
£519.95
+VAT

PANEL HEATERS

- Slim and contemporary design suitable for domestic and commercial use
- Requires wall mounted wireless controller [sold separately – see page 33]
- Mounted: Wall
- IP24
- Complies with Lot 20



Includes:

- Snap-on wall bracket
- 1.8 m Cable

2 YEARS
ON-SITE
GUARANTEE

FROM
£131.75
+VAT

Code	Power Rating	Height	Width	Depth	1+	3+
2379-6436	500W	430 mm	442 mm	93 mm	£131.75	£129.75
2379-6439	750W	430 mm	442 mm	93 mm	£133.95	£131.95
2379-6427	1 kW	430 mm	614 mm	93 mm	£146.75	£144.75
2379-6430	1.5 kW	430 mm	720 mm	93 mm	£159.95	£157.95
2379-6433	2 kW	430 mm	852 mm	93 mm	£166.95	£164.95

HIGH HEAT RETENTION STORAGE HEATERS



- Customisable heating with four time and temperature settings per day
- SAP Approved high heat retention storage heaters
- Digital thermostat for accurate heating control $\pm 0.2^{\circ}\text{C}$
- Open window technology
- Adaptive start: Anticipatory control
- Free 3D AutoCAD heating design scheme service [details on page 1202 of CEF Catalogue Issue 14]
- Mounted: Floor [secured to wall]
- IPX4
- Complies with Lot 20



Includes:

- Wall bracket
- Support feet

2 YEARS
ON-SITE
GUARANTEE

10 YEARS
GUARANTEE
ON REGISTRATION

FROM
£614.95
+VAT

Code	Power Rating	Height	Width	Depth	1+	3+
2609-5093	500W	730 mm	580 mm	185 mm	£614.95	£604.95
2609-5096	750W	730 mm	703 mm	185 mm	£659.95	£649.95
2609-5099	1 kW	730 mm	865 mm	185 mm	£729.95	£719.95
2609-5102	1.25 kW	730 mm	1069 mm	185 mm	£799.95	£789.95
2609-5105	1.5 kW	730 mm	1069 mm	185 mm	£869.95	£859.95

PUSHBUTTON TIMER AND THERMOSTAT

- Compatible with Heatstore wireless heaters including ceiling heaters
- Basic mode: Power On / Off with single press
- Four stage run back timer: 5, 15 or 30 mins [which can be increased to 20, 60 or 120 mins with four presses]
- Comfort temperature control
- Can be used for frost protection
- Mounted: Surface



1 YEAR
GUARANTEE

ONLY
£32.95
+VAT

Code	1+	3+
2379-6442	£32.95	£31.95

RUN BACK TIMER AND VARIABLE THERMOSTAT

- Compatible with Heatstore wireless heaters including ceiling heaters
- Current room temperature displayed, or target temperature once pressed
- Four stage run back timer: 5, 15 or 30 mins
- Comfort temperature control
- Can be used for frost protection
- Mounted: Surface



1 YEAR
GUARANTEE

ONLY
£59.50
+VAT

Code	1+	3+
2379-6460	£59.50	£58.50

7 DAY TIMER AND THERMOSTAT

- Compatible with Heatstore wireless heaters including ceiling heaters
- Seven day timer with six heating periods per day
- Open window technology
- Four settings: Boost, manual, set back and program
- Boost period: 15 mins
- Mounted: Surface



1 YEAR
GUARANTEE

ONLY
£65.95
+VAT

Code	1+	3+
2561-9428	£65.95	£64.95

1.85 kW TEMPESTA BLADE ABS HAND DRYERS

- Switch between warm air [1.85 kW] and cool air [800W] – via the internal switch
- Hygienic two stage 99% HEPA filtered air and UV sterilisation
- Hidden and easy to empty water collection tray
- Drying time: 7 - 10 secs
- Dimensions: 669 mm[H] x 298 mm[W] x 184 mm[D]
- IPX4

Includes:

- Cleaning brush



Code	Colour	Air Speed	Decibel Rating	1+	2+
2637-2800	White	85 m/s	83 dB[A] @ 1 m	£349.95	£339.95
2703-4048	Silver	85 m/s	83 dB[A] @ 1 m	£388.95	£378.95

kgCO2e SAVING

UP TO 193.09 kgCO2e

YOU SAVE

UP TO £261.18 OVER 365 DAYS

ENERGY SAVING COMPARISON:

Traditional 1.8 kW Hand Dryer [Dry time 30 secs] vs Tempesta Blade 800W Cool Air Output [Dry time 10 secs]. Based on a medium footfall of 200 people per day.



Visit cef.co.uk for video demonstration

2 YEARS GUARANTEE

FROM
£349.95 +VAT

900W TEMPESTA STAINLESS STEEL HAND DRYER

- Selectable power rating at installation: 600 / 900W
- Sensing distance: 100 mm
- Drying time: 10 secs
- Dimensions: 300 mm[H] x 250 mm[W] x 159 mm[D]
- IP22



2 YEARS
GUARANTEE

ONLY
£137.50
+VAT

Code	Air Speed	Decibel Rating	1+	2+
2183-7592	105 m/s	80 dB[A] @ 1 m	£137.50	£134.50

kgCO2e SAVING

UP TO 201.48
kgCO2e

YOU SAVE

UP TO £272.48
OVER 365 DAYS

ENERGY SAVING COMPARISON:

Traditional 1.8 kW Hand Dryer [Dry time 30 secs] vs Tempesta 600W [Dry time 10 secs].
Based on a medium footfall of 200 people per day.

800W TEMPESTA PLUS STAINLESS STEEL ENERGY EFFICIENT HAND DRYER

- Auto-selects power rating depending on ambient temperature: 200 / 800W
- Sensing distance: 100 mm
- Drying time: 10 secs
- Dimensions: 278 mm[H] x 228 mm[W] x 154 mm[D]
- IP22



4 YEARS
GUARANTEE

ONLY
£199.95
+VAT

Code	Air Speed	Decibel Rating	1+	2+
2183-7595	85 m/s	70 dB[A] @ 1 m	£199.95	£196.95

kgCO2e SAVING

UP TO 218.27
kgCO2e

YOU SAVE

UP TO £295.24
OVER 365 DAYS

ENERGY SAVING COMPARISON:

Traditional 1.8 kW Hand Dryer [Dry time 30 secs] vs Tempesta Plus 200W [Dry time 10 secs].
Based on a medium footfall of 200 people per day.

SINGLE ROOM HEAT RECOVERY UNIT

- Up to 93% heat recovery
- Acoustic external wall vent reduces noise and draughts
- Power rating: 1.5W / 2.5W / 4.5W
- Airflow: 15 / 30 / 50 m³ / h
- Decibel rating: Up to 20 dB[A] @ 3 m
- IP2X



5 YEARS
WARRANTY

ONLY
£324.95
+VAT

Code	1+	3+
Mains Voltage [230V]		
2733-1471	£324.95	£314.95

ZONE 1 WHISPER QUIET FAN

- Type: Axial
- Uses Whisper Air Movement Efficiency to achieve near-silent running
- Power rating: 7.5W
- Airflow: 97 m³ / h
- Decibel rating: 25 dB[A] @ 3 m
- Built-in backdraught shutter
- Mounted: Wall or ceiling
- IP45



5 YEARS
WARRANTY

ONLY
£45.75
+VAT

Code	Operation	1+	3+
Mains Voltage [230V]			
2561-2759	Timer [2 - 30 mins]	£45.75	£43.95

WHISPER CONTINUOUS ALL-IN-ONE FAN

- Type: Axial with mixed flow impeller
- Speeds: 5 [intermittent and continuous options]
- Power rating: 0.6 - 3.4W
- Airflow: 22 - 83 m³ / h
- Decibel rating: 10 - 21 dB[A] @ 3 m
- Built-in backdraught shutter
- Mounted: Wall or ceiling
- IP45



5 YEARS
WARRANTY

ONLY
£122.95
+VAT

Code	Operation	1+	3+
Mains Voltage [230V]			
2624-3890	Timer [2 - 30 mins] + Humidistat [60 - 90%]	£122.95	£121.25

63A ECONO-MIZER SINGLE PHASE SINGLE TAP VOLTAGE OPTIMISATION UNIT

- Suitable for home use and small business premises including: Hotels, restaurants, pubs, offices and retail units
- Reduces electricity consumption by up to 14%
- Prolongs the life of your electrical appliances by carefully reducing the voltage to 220V
- Works with solar PV, wind power and heat pumps
- IP31



**5 YEARS
GUARANTEE**

Includes:

- 63A C Curve single pole MCB
- 100A 2 Pole isolator

Code	Height	Width	Depth	1+
2 Pole – Single Tap 7.5%				
2171-3353	230 mm	310 mm	100 mm	£369.50

YOU SAVE

**REDUCES ELECTRICAL EQUIPMENT'S
ENERGY CONSUMPTION AND CARBON
FOOTPRINT UP TO 14%**

**ONLY
£369.50
+VAT**

100A ECONO-MIZER SINGLE PHASE MULTI TAP VOLTAGE OPTIMISATION UNIT

- Suitable for use in homes and smaller business premises
- Reduces electricity consumption by up to 19%
- Three fixed tap settings: 6, 8 & 10% for optimum voltage control
- Supplied complete with full circuit protection
- Saves you money 24 hours a day, 7 days a week
- Silent operation
- Reduces carbon footprint
- Prolongs the life of your electrical appliances
- Works with solar PV, wind power and heat pumps
- Easily installed by a qualified electrician
- Immediate savings
- No maintenance



**5 YEARS
WARRANTY**

Code	Height	Width	Depth	1+
2 Pole - Multi Tap [6, 8 and 10%]				
1830-3052	250 mm	380 mm	140 mm	£699.95

YOU SAVE

**REDUCES ELECTRICAL EQUIPMENT'S
ENERGY CONSUMPTION AND CARBON
FOOTPRINT UP TO 19%**

**ONLY
£699.95
+VAT**

ENCLOSED VARIABLE SPEED DRIVES

- Range: Easy Speedy
- Enclosed inverter panel supplied ready to run with the latest Emotron FDU and VS inverters fitted as standard
- Integral EMC filter and keypad / display
- Simple start and stop buttons
- Internally-mounted, adjustable energy saving potentiometer
- Removable gland plates
- IP54
- BS EN 60947



Code	Current Rating	kW Rating	Height	Width	Depth	1+
Single Phase – 230V						
2179-6921	1.7A	0.25 kW	300 mm	300 mm	200 mm	£699.95
2179-6924	2.4A	0.37 kW	300 mm	300 mm	200 mm	£709.95
2179-6927	3.2A	0.55 kW	300 mm	300 mm	200 mm	£764.95
2179-6930	4.2A	0.75 kW	300 mm	300 mm	200 mm	£786.95
2179-6933	6A	1.1 kW	400 mm	300 mm	200 mm	£858.95
2179-6936	7A	1.5 kW	400 mm	300 mm	200 mm	£904.95
2179-6939	9.6A	2.2 kW	400 mm	300 mm	200 mm	£951.50
3 Phase – 400V						
2179-6942	1.3A	0.37 kW	300 mm	300 mm	200 mm	£807.95
2179-6945	1.8A	0.55 kW	300 mm	300 mm	200 mm	£819.75
2179-6948	2.4A	0.75 kW	300 mm	300 mm	200 mm	£839.95
2179-6951	3.2A	1.1 kW	400 mm	300 mm	200 mm	£953.50
2179-6954	3.9A	1.5 kW	400 mm	300 mm	200 mm	£974.95
2179-6957	5.6A	2.2 kW	400 mm	300 mm	200 mm	£1,009.95
2179-6960	7.3A	3 kW	400 mm	300 mm	200 mm	£1,132.95
2179-6963	9.5A	4 kW	400 mm	300 mm	200 mm	£1,304.95
2179-6966	13A	5.5 kW	400 mm	300 mm	200 mm	£1,279.95
2179-6972	16.5A	7.5 kW	500 mm	400 mm	200 mm	£1,594.95

2 YEARS
GUARANTEE

YOU SAVE

10% SLOWER = UP TO 25% SAVING
20% SLOWER = UP TO 45% SAVING
30% SLOWER = UP TO 65% SAVING

FROM
£699.95
+VAT

Renewables

Solar PV | Mounting Systems | Battery Storage | Accessories

At CEF our mission is to provide you with easy access to thousands of renewable energy products for your home or business, backed up by the same expert guidance and customer service we have become known for.

Everybody at CEF Renewables is here to support your transition to renewable and greener technologies.

Our team are on-hand to provide you with support, guidance, training and products to enable you and your clients to make the most of the UK's road to NET Zero Strategy.

We stock:

- Solar panels
- Inverters
- Battery storage
- Mounting equipment
- And all associated ancillaries to fit them

From leading brands giving you the confidence to take back control of your energy future.

In the current climate of rising energy costs, scarcity of natural resources and the need to address the climate challenges facing our planet, the technologies discussed in this brochure provide a solution to help with all of the above.

These products allow you or your client to start their journey of self-generation, self-storage and self-determination of electricity. Whether used to power your vehicle, home, business or community – you can control your energy future.

Services CEF Renewables can offer you:

- Access to a wide range of industry leading products
- Nationwide stock availability and delivery
- Training and upskilling
- Consultancy and specification support
- Localised renewables specialists
- Central phone and email support
- Tailored renewables solutions to support your roadmap to net-zero



PARTNERING WITH LEADING INNOVATORS



Shop 100s more renewable products at cef.co.uk/renewables



MULTIFUNCTION INSTALLATION TESTER WITH EV TESTING ADAPTOR – ETHOS 8560 EV TEST KIT

- Simple to operate – just select and test
- Test EV charging units with adaptor supplied [2705-2399]
- Surge protection device testing
- Large, full colour display with precise easy-to-read values
- High accuracy non-trip loop testing
- Auto sequence RCD testing with all results on one screen
- 250, 500 and 1,000V Insulation test
- Full range of RCD tests including ramp and auto tests for Type AC and A, AC[s] and A[s] plus B RCDs
- PSSC, PEFC Testing and Max. Zs measurement
- Phase rotation
- Polarity check with full colour indication
- Battery saving mode with fast restart

Kit contents:

- ETHOS 8500 Multifunction installation tester
- ETHOS 8600 Test adaptor
- Type 2 to Type 1 connection adaptor
- Full lead set with probes and croc clips
- Switched probe
- Mains plug test lead
- Calibration certificate
- 2 x Carry cases
- 6 x Batteries: AA



CLICK HERE TO VIEW
THE NEW EV & PV TEST
EQUIPMENT PRODUCT
GUIDE - ISSUE 1



3 YEARS
GUARANTEE

2726-9110

ONLY
£994.95
+VAT

Shop the easy way

Get the essential electrical products you need to get the job done

Choose how you shop

Trade Catalogue

- Browse, research and compare products
- Get prices for everyday essentials
- Order in-branch or online

Online at cef.co.uk

- Over 40,000 products
- Free delivery on orders over £50

Trade App

- Scan products in the Trade Catalogue on your smartphone
- Pay securely
- Delivery to a location that suits you

Digital Catalogue

- Browse and shop the Trade Catalogue online
- Check stock online and in-branch
- Visit catalogue.cef.co.uk

Visit cef.co.uk or contact your local CEF branch today



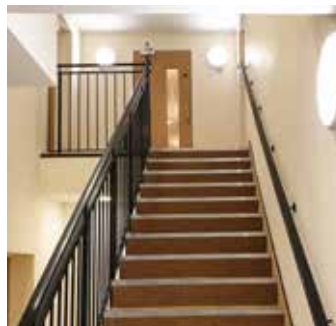
Did you know CEF can now offer simple fixed-term lease finance for many of your product needs?

A wide range of equipment can be financed, including energy-saving products such as lighting.

Products available with finance options include:

- CCTV
- Alarm systems
- Heating products
- Lighting [including LED Lamps]
- Inverters
- Solar PV
- Test equipment
- Air conditioning
- Hand dryers
- Air purifiers
- Domestic appliances [for commercial use]

Plus many more products



DON'T FORGET We also offer free of charge surveys and design schemes

£500 is the minimum amount which can be financed. Terms and conditions as per the finance Company and are subject to formal credit approval and underwriting. Private sector Companies must have Limited or PLC status. E & O E

Financing equipment through your local CEF branch makes good business sense

Some of the key benefits to your organisation include:

- Convenient and fast
- Makes the right solution for your business affordable – right now!
- Conserves working capital and existing credit lines
- Tax efficient
- Fixed payments and flexible terms
- Quick and straightforward application process

CEF will help you identify the right products for your business and our Finance Department will guide you through the easy steps of accessing finance:

STEP 1



Provide a free of charge survey and design solution

STEP 2



Recommend the right solution for your business

STEP 3



In conjunction with our partners offer free advice on the finance solutions

STEP 4



Assist with the application for finance

STEP 5



See the whole job through, from initial survey to supplying equipment

FOR FURTHER INFORMATION PLEASE CONTACT YOUR LOCAL BRANCH

SUSTAINABLE RECYCLING SOLUTIONS

CEF are committed to providing their customers with a unique recycling solution, to ensure all electrical waste is recycled responsibly and valuable resources are captured and recovered for our future generations.

CEF are the only electrical distributor in the UK to have an in-house electrical waste recycling facility, offering our customers a complete one-stop recycling service and compliance in line with all current legislation.

waste
experts

flexible - reliable - responsible

ASK IN-BRANCH OR VISIT
cef.co.uk/waste-recycling
FOR MORE INFORMATION



YOUR
ELECTRICAL
EXPERTS

DID YOU KNOW?



CEF recycle over **1 million** lamps a year

CEF recycle **more electrical waste** than any other UK electrical distributor



CEF care for the environment by **recycling 98%** of the electrical waste it receives

CEF have a network of over **390 branches** ready to help you meet your environmental responsibilities



IN-BRANCH | [CEF.CO.UK](https://cef.co.uk) | TRADE CATALOGUE | APP

All products are subject to availability and prices are correct at the time of print.
Prices valid until 5:30pm on 30th April 2024.