



WIRELESS DOOR CHIME KIT INSTRUCTION MANUAL

200m Auto-learning Code Door Chime

For models:

F4P-831AMWH and F4P-831AMBL



Please read these instructions carefully and keep for future reference

WIRELESS DOOR CHIME KIT INSTRUCTION MANUAL



200M Auto-learning Code Door Chime

For models: F4P-831AMWH and F4P-831AMBL

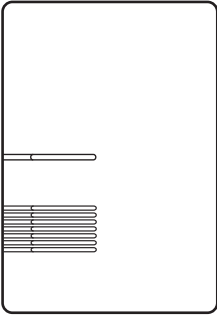
Please read these instructions carefully
and keep for future reference

It's very important to install and operate this product according to the following instructions, failure to do so may render your guarantee void.

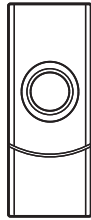
Parts List

The door chime kit comes complete with:

- 1 x Receiver
- 1 x 3 Volts CR2032 battery for transmitter
- 1 x Instruction Manual
- 1 x Transmitter/Push
- 1 x Double-sided adhesive tape



Receiver



Transmitter/Push



CR2032
Battery

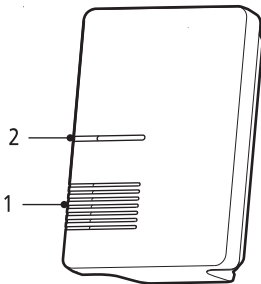


Double-side
Adhesive Tape

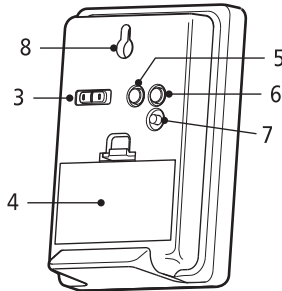


Instruction
Manual

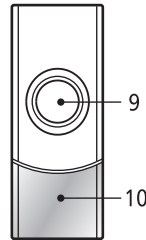
Parts Identification



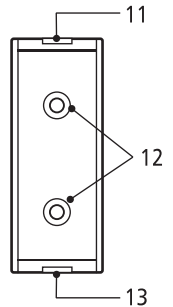
Receiver
Front View



Receiver
Back View



Transmitter/Push
Cover



Transmitter/Push
Inside Back Cover

- | | | | |
|---------------------------|------------------------------|-------------------------------|---------------|
| 1. Speaker | 5. Volume Button | 9. Push Button | 13. Interface |
| 2. LED Indicator | 6. Melody Selector | 10. Nameplate Cover | |
| 3. Sound and Flash Switch | 7. Auto-learning Code Button | 11. Front and back cover hook | |
| 4. Battery Cover | 8. Hanging Hole | 12. Standby holes for screws | |

Notes before Installation

1. Before installation and operation, you will require a drill, a cross-headed screwdriver, a flat head screwdriver, 2 × 1.5V AA size batteries, fixing screws and wall plugs. All of these are not supplied with this kit.
2. Avoid the positioning Transmitter on metal frames or surfaces.
3. Avoid positioning above heat sources such as radiators, or in damp areas such as a kitchen or bathroom.

How to use the door chime kit?

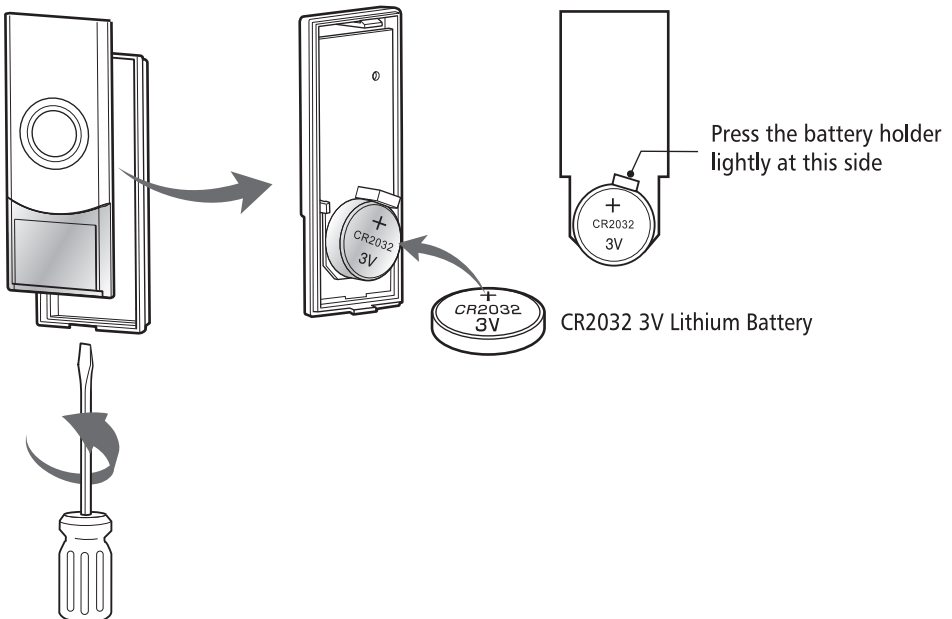
By pressing the Transmitter/Push, a wireless signal will be sent to the Receiver. The Receiver will be activated and sound. The operating range is 200m (in the open air) and you can place the Receiver virtually anywhere at home (indoor use only). However, the transmission range will be reduced if the signal is transmitted through a number of walls or ceilings, metal or UPVC door frames can also reduce the operating range.

Battery Installation

Transmitter/Push

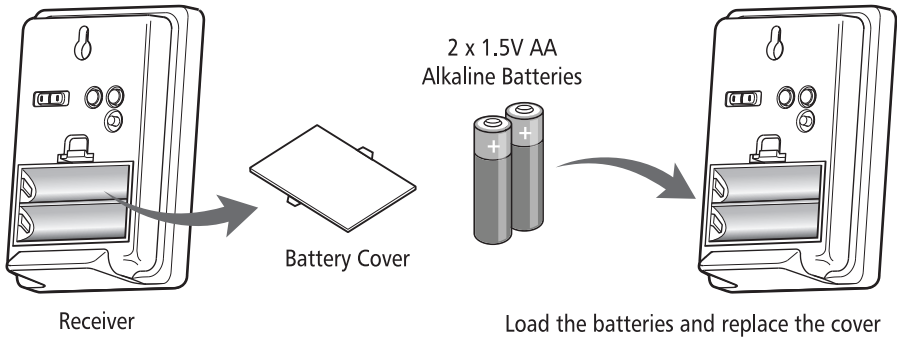
The transmitter uses a 3V CR2032 battery (included).

Open the Transmitter (by inserting and gently twisting a small flat screw driver into the slot located at the bottom of the unit) and fit the battery. Please ensure the battery is fitted correctly and the polarity is correct, then click the two halves of the push back together. To replace with a new battery, repeat this process.



Receiver Unit

Remove the battery cover and insert 2 × 1.5V AA batteries (not included); Ensure the battery polarity matches the internal markings.



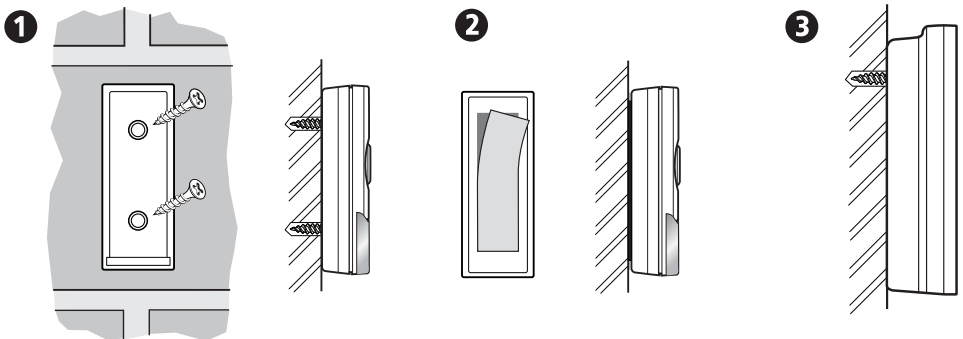
Wall Mount

To install you will require a drill and a suitable screwdriver.

IMPORTANT: Before you drill any hole in any wall, please make sure there are no hidden cables or pipes to avoid accidental damage.

Transmitter Unit

1. Open the Transmitter with a screw driver and separate the front cover from back covers, as mentioned before. Pierce the two standby holes at the back cover for two screws. Then fix the screws on the wall at a suitable height. Mounting on UPVC or metal door frame surfaces will reduce the transmitting range. (Fig. 1 below)
2. Or you can stick the Transmitter with the double-sided adhesive tape. (As Fig. 2)



Receiver Unit

Fix a screw on the wall. Then hang the Receiver by the hole at the back of the unit (Fig. 3). Avoid positioning on UPVC Frames, above heat sources (eg: radiators) or in damp areas such as kitchens or bathrooms.

Important: Test the Receiver before drilling any holes to ensure it is within operating range.

Note: As an alternative, the Receiver can also be placed on the flat surface, such as a table etc.

Functions Instruction

Door Chime Operation

Press the push button on the Transmitter unit once, it sends a wireless signal to the Receiver which will sound. The sound will stop as soon as the melody ends. For repeat sound, press the button again. Holding the button in will NOT repeat the sound.

Melody Selection

There is a melody selector located on the back of the door chime (see page 2, item 6). Press the selector to change to a different melody.

Sound and Flash

There is a switch on the back of the Receiver (see page 2, item 3). If you slide the switch to the left position, the Receiver will work only with sound; slide to the middle position, only the LED will flash; slide to the right position will give both sound and LED flash.

Volume Adjustment

There is a volume button between melody selector and sound-and-flash switch. Press it to adjust the sound volume to be high, medium and low.

Auto-learning Code Button

There is an auto-learning code button under the melody selector. If you want an additional Transmitter to work with the Receiver, you need to press the auto-learning code button once and the Transmitter will work with the Receiver. (Please see detailed operation Auto-learning Code Set Up on page 6 of this manual).

Nameplate

There is a name plate position on the Transmitter. It's for your signature for identification. You will need to remove the nameplate cover and put in a suitable size label with your name or other information. Then re-fit the nameplate cover. (a label is not included.)

Important

1. The Receiver is designed for indoor use only.
2. Do not mount the Transmitter onto any metal surface or UPVC doorframes, as this will reduce the operation range.
3. Do not expose either unit directly to rain or immerse in water.
4. Do not mount either unit close to a fireplace or expose to high temperature.
5. If leaving the chime for long periods, remove the battery from the battery compartment to prevent leakage.
6. Dispose of old batteries in accordance with the local authority's relevant legislation.

User Hints

If the Receiver does not sound, please check the following:

- Flat batteries in either Transmitter or Receivers-change the batteries.
- Wrong battery polarity in either Transmitter or Receivers-reinsert the batteries.
- Units are out of range-Operate the Receiver within the operation range.

Specification

A. Transmitter unit

Power: 1 × 3 Volts CR2032 battery (included)

B. Receiver unit

Power: 2 x 1.5 Volts AA alkaline batteries (not included)

Operating Temperature: -20° to +40°C

Operating Distance: 200 metres in an open field/suitable conditions (656ft approx.)

Selectable Tone: Total 36 melodies available

Digital Code Type: Auto-learning

What is the Auto-learning Code?

The Transmitter sends a wireless signal to the Receiver. The Receiver will automatically register and memorise the signal as an operation code. The Transmitter will then work with the Receiver using this code.

Auto-learning Code Set Up

The Door Chime Kit is equipped with auto-learning operation code ability.

1. Operation for 1 transmitter and 1 receiver

After battery installation on both Transmitter and Receiver, press the Transmitter once to generate a new operation code. The Receiver will sound, which indicates that a new operation code is registered and memorised.

2. Interference from another door chime operating nearby (For example, Receiver sounds for no reason): Remove the batteries from the Receiver and rest for 30 seconds, this will erase the memory. Insert the batteries, and then the Transmitter and the Receiver are ready for the new code registration.

3. Operation for the 2nd / 3rd / 4th / 5th Transmitters and the receiver (There is only 1 Transmitter included):

- a. Load the batteries into the Transmitters, and the Receiver is ready for the new code registration.
- b. Press the auto-learning code button on the back of the Receiver once, it will be ready to receive the signal sent from the second Transmitter. Press the button of the Transmitter, the Receiver will sound to indicate that new operation code is registered and memorised. Then the second Transmitter will work successfully with the Receiver.

For the 3rd, 4th, and 5th Transmitters, please follow the same procedure to work with the Receiver.

- c. It is important to remember that when you replace exhausted batteries with new ones, you will need to follow the same procedure of the auto-learning code set-up as detailed previously.

Important:

1. If the Receiver sounds for no reason during the digital code setting, it is an indication that it has been operated by other similar a Door Chime(s) nearby, reset the auto-learning code as per point 2 above.
2. One Receiver can only work with a maximum of 5 Transmitters at the same time. Extra receivers can be purchased from your supplier.

IMPORTANT: PLEASE KEEP THESE INSTRUCTIONS FOR FUTURE REFERENCE WHEN REPLACING BATTERIES



Notes: