

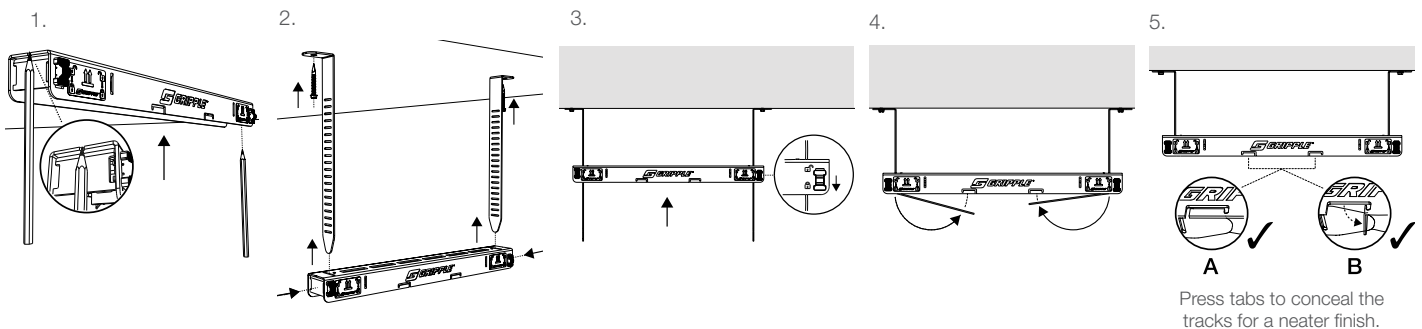
Pre-fabricated trapeze bracket solution offering speed, flexibility and efficient use of space, for the installation of electrical containment, pipework, ductwork and other mechanical services in restricted places.

FEATURES / BENEFITS

- **Quick** – up to six times faster to install than traditional suspension systems
- **Safe** – pre-fabricated system which removes the need to cut threaded rod or channel on site
- **Tool free** – bracket can be moved up and down the tracks to accommodate changes in position during installation
- **Secure** – safety locks ensure security once brackets & tracks are in place
- **Zero waste** – tracks bend neatly under bracket
- **Space saver** – can be multi-tiered to accommodate additional services
- **Easy measurement** – indicators at each end of the bracket can be used as a measurement guide when marking fixing points in the soffit
- **Neat & tidy** – system can be 'stacked' on-site to reduce storage

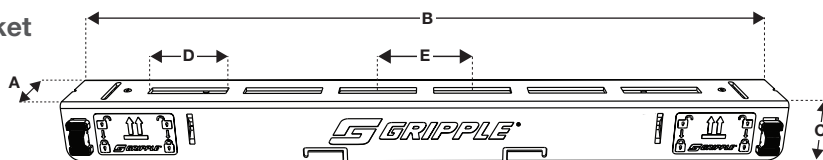


INSTALLATION & ADJUSTMENT



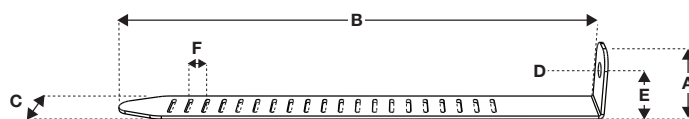
SPECIFICATION

Bracket



Bracket	A (mm)	B (mm)	C (mm)	D (mm)	E (mm)	Distance Between Traks	Max Single Point Load	Max Uniform Load (UDL)
FTB250	44	309	35	45	55	250 mm	90 kg	180 kg (3:1)
FTB350	44	409	35	45	55	350 mm	90 kg	180 kg (3:1)
FTB450	44	509	35	45	55	450 mm	90 kg	180 kg (3:1)
FTB600	44	659	35	45	55	600 mm	90 kg	180 kg (3:1)
FTB750	44	809	35	45	55	750 mm	90 kg	180 kg (3:1)
FTB900	44	959	35	45	55	900 mm	90 kg	180 kg (3:1)
FTB1050	44	1109	35	45	55	1050 mm	45 kg	90 kg (3:1)
FTB1200	44	1259	35	45	55	1200 mm	45 kg	90 kg (3:1)
FTB1500	44	1559	35	45	55	1500 mm	45 kg	90 kg (3:1)

Track



- FTT 785 track slots begin 250 mm below the bend.

Track	A (mm)	B (mm)	C (mm)	D (Ø)	E (mm)	F (mm)	Safe Working Load (per track)
FTT 285	40	285	28	10.1	24	10	90 kg (5:1)
FTT 535	40	535	28	10.1	24	10	90 kg (5:1)
FTT 785	40	785	28	10.1	24	10	90 kg (5:1)

MOUNTING METHODS

- Shot Fire
- Drop-in Anchor
- Concrete Screw
- Wood Screw
- Wedge Anchor

Please check load ratings of fixings as these may differ to the Fast Trak system SWL.

For more options on suspension methods please contact us or visit www.gripple.com

SUBMITTAL INFORMATION

Safe Working Load:

See table in specification

Material:

BS EN 10346:2009 DX51D (Mild Steel)

Button – Polypropylene, Impact Copolymer

Approvals:

Lloyds certified

UL tested

Fire tested by Exova to F120

TUV tested

APAVE tested

