

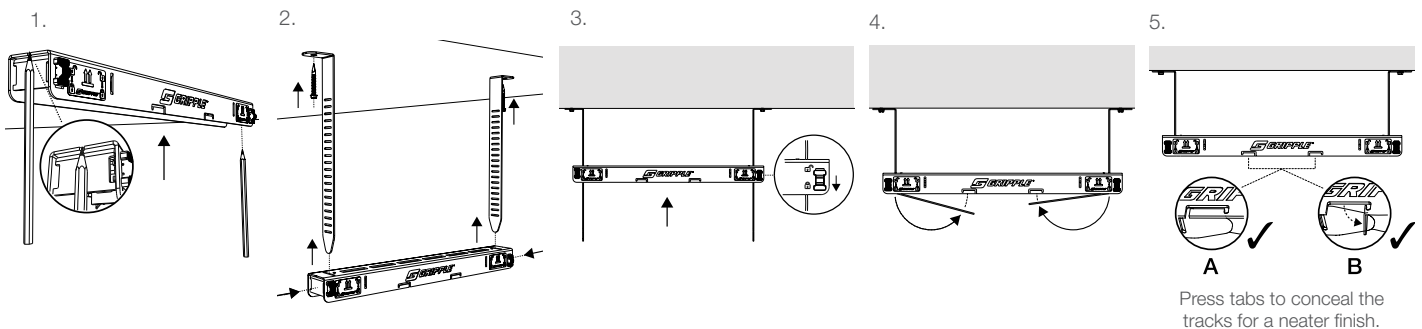
Pre-fabricated, trapeze bracket solution offering speed, flexibility and efficient use of space, for the installation of electrical containment, pipework, ductwork and other mechanical services in restricted places.

## FEATURES / BENEFITS

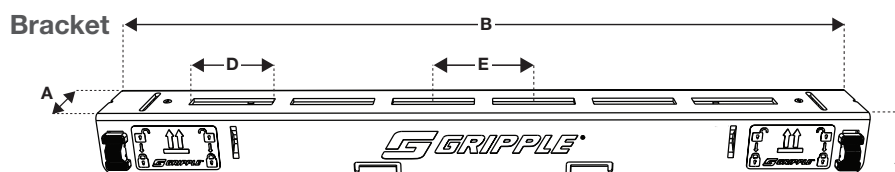
- **Quick** – up to six times faster to install than traditional suspension systems
- **Safe** – pre-fabricated system which removes the need to cut threaded rod or channel on site
- **Tool free** – bracket can be moved up and down the tracks to accommodate changes in position during installation
- **Secure** – safety locks ensure security once brackets & tracks are in place
- **Zero waste** – tracks bend neatly under bracket
- **Space saver** – can be multi-tiered to accommodate additional services
- **Easy measurement** – indicators at each end of the bracket can be used as a measurement guide when marking fixing points in the soffit
- **Neat & tidy** – system can be 'stacked' on-site to reduce storage



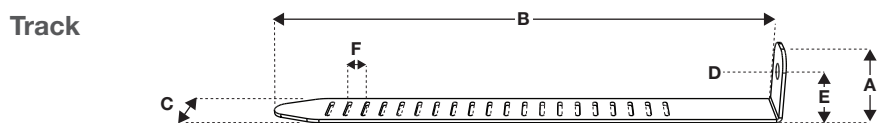
## INSTALLATION & ADJUSTMENT



## SPECIFICATION



Bracket	A (mm)	B (mm)	C (mm)	D (mm)	E (mm)	Distance Between Traks	Max Single Point Load	Max Uniform Load (UDL)
FTB250	44	309	35	45	55	250 mm	90 kg	180 kg (3:1)
FTB350	44	409	35	45	55	350 mm	90 kg	180 kg (3:1)
FTB450	44	509	35	45	55	450 mm	90 kg	180 kg (3:1)
FTB600	44	659	35	45	55	600 mm	90 kg	180 kg (3:1)
FTB750	44	809	35	45	55	750 mm	90 kg	180 kg (3:1)
FTB900	44	959	35	45	55	900 mm	90 kg	180 kg (3:1)



Track	A (mm)	B (mm)	C (mm)	D (Ø)	E (mm)	F (mm)	Safe Working Load (per track)
FTT 285	40	285	28	10.1	24	10	90 kg (5:1)
FTT 535	40	535	28	10.1	24	10	90 kg (5:1)

## MOUNTING METHODS

- Shot Fire
- Drop-in Anchor
- Concrete Screw
- Wood Screw
- Wedge Anchor

Please check load ratings of fixings as these may differ to the Fast Trak system SWL.

For more options on suspension methods please contact us or visit [www.gripple.com](http://www.gripple.com)

## SUBMITTAL INFORMATION

### Safe Working Load:

See table in specification

### Material:

BS EN 10346:2009 DX51D (Mild Steel)

**Button** – Polypropylene, Impact Copolymer

### Approvals:

Lloyds certified

Load tested by Element

Fire tested by BRE

TUV tested

APAVE tested

