

Underground Distribution

Fuse Service Equipment

Street Lighting Cutouts

Rated at 25A for single phase supplies.

At the heart of maintaining the supply to street lighting luminaires are robust and reliable fused Cutouts.

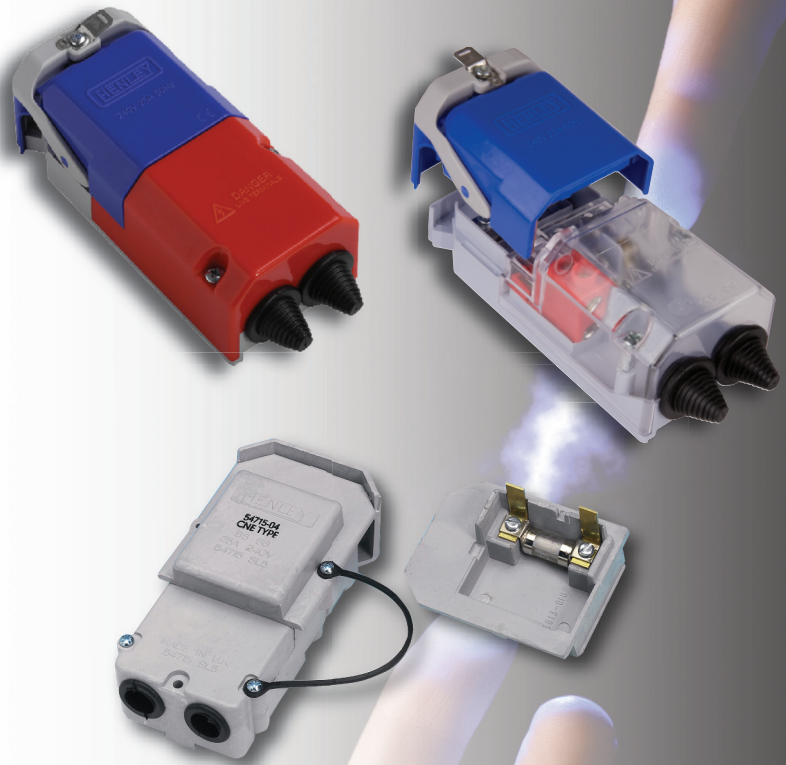
W T Henley has a choice of two slim-line single phase models, incorporating either a single pole or double pole switching action. Both of these are manufactured from glass re-inforced flame retardant materials, designed to be robust yet lightweight, incorporating a low force lever release system.

All the Street Lighting Cutouts are designed to meet the requirements of BS 7654:2010 and are configured for SNE or CNE cables as required. Each is designed with a drip proof hood.

These units not only allow the looping in and out of single phase supplies but when used in conjunction with our optional terminals and shrouds, will also suit a 3-phase supply.

All W T Henley cut-outs are designed to accept offset tag type fuse-links (LST) and are supplied complete with fixing screws and cable entry bushes.

- Slim-line compact designs – ideal for modern lighting columns and other street furniture with space restrictions where internal space is restricted.
- Fuse carriers accept offset tag type fuselinks to BS 88 Pt1/IEC 269-1.
- Both single and double pole isolation available.
- Kit available to enable use of 3-phase supplies.
- CNE or SNE versions.
- IPC (Insulated Piercing Connector) version requiring no stripping of Insulation.
- Padlocking 'dead' facility available.
- Supplied with incoming/outgoing bushes.
- Looping in /out.
- Suits Aluminium or Copper conductors.
- Armour termination kit available.



Product data

Low force lever release style

Overall Dimensions

Height: 150mm
Width: 67mm
Projection: 49mm

Wiring Facilities

Basic Cutout accepts single phase cables only.
Terminals suitable for terminating up to 25mm²
Solid Aluminium or stranded Copper conductors.

To use with 3 phase cables

This requires additional loop in connectors and terminal shrouds. For each cutout it is necessary to use 4 loop-in connectors plus 4 shrouds.

Loop in/out Connector Terminals

Incoming – Loop in/out up to 35mm² aluminium or copper conductors.

Outgoing – two ways for up to 16mm² Stranded Copper.

For armoured cables up to 16mm² 4-core

An armour bond kit is available, comprising: - clamp, ferrules, lead-strips and fixing screws. Suitable for loop in/out cables.

Original style

Overall Dimensions

Height: 145.5mm
Width: 73.9mm
Projection: 56.9mm

Wiring Facilities

Basic Cutout accepts single phase cables only.
Terminals suitable for terminating up to 25mm²
Solid Aluminium or 16mm² stranded Copper conductors.

To use with 3 phase cables

This requires additional loop in connectors and terminal shrouds. For each cutout it is necessary to use 4 loop-in connectors plus 4 shrouds.

Loop in/out Connector Terminals

Incoming – Loop in/out up to 35mm² aluminium or copper conductors.

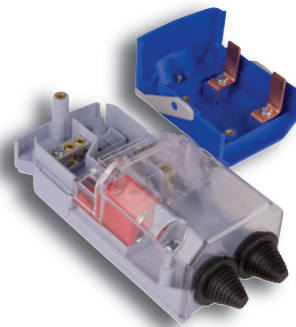
Outgoing – two ways for up to 16mm² Stranded Copper.

For armoured cables up to 16mm² 4-core

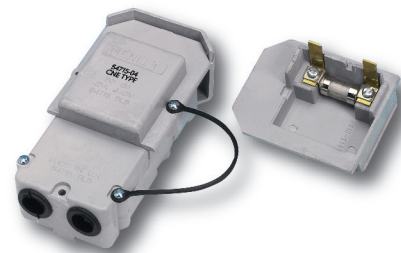
An armour bond kit is available, comprising: - clamp, ferrules, lead-strips and fixing screws. Suitable for loop in/out cables.



Low Force Lever Release model



Low Force Lever Release model with clear cover



Original model

General Note: The equipment in this publication should be installed by a suitably qualified person. Sicame UK Limited reserves the right to make changes in product specification without notice or liability. All information is subject to Sicame UK's own data and is considered accurate at time this document was created.

© 2014 Sicame UK Limited. All rights reserved. No part of this document may be copied or reproduced in whole or in part without prior written approval of Sicame UK Limited.

8219 2012-01-25

