



EAN:		Size:	185x115x240 mm
Part number:	05004310001	Weight:	1115 g
Article number:	Kraftform 2go 100	Country of origin:	CZ
		Customs tariff number:	82054000

- Insulated VDE blades for secure work at 1,000 volts
- Multi-component Kraftform Micro handle for fast and ergonomic screwdriving
- Lasertip tips for more secure fit in the screw head
- Hexagonal anti-roll feature against rolling away
- Suitable for docking with the Wera 2go system.

11 VDE-insulated, Kraftform screwdrivers; with "Take it easy" Toolfinder; in the Wera 2go 4 quiver; comes with an adjustable partition element for individual sectioning.

Web link

https://products.wera.de/en/vde_tools_kraftform_plus__series_100_vde_kraftform_2go_100.html

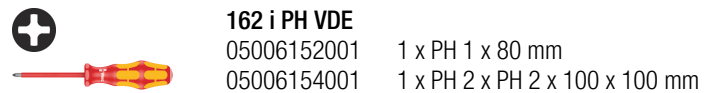
Wera - Kraftform 2go 100
05004310001 -

Wera Werkzeuge GmbH
Korzerter Straße 21-25
D-42349 Wuppertal
Tel: +49 (0)2 02 / 40 45-0
E-Mail: info@wera.de

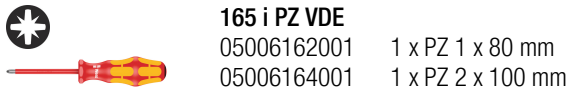
Set contents:



Wera 2go 4
05004353001 1 x 105 x 165 x 165 mm



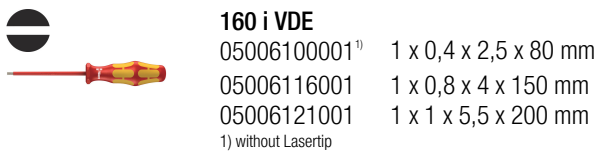
162 i PH VDE
05006152001 1 x PH 1 x 80 mm
05006154001 1 x PH 2 x PH 2 x 100 x 100 mm



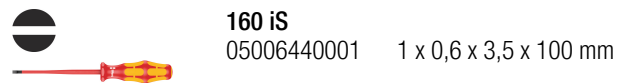
165 i PZ VDE
05006162001 1 x PZ 1 x 80 mm
05006164001 1 x PZ 2 x 100 mm



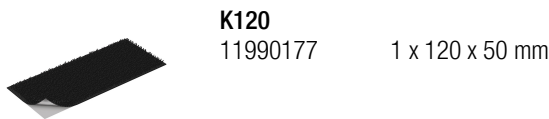
167 i TORX® VDE
05006170001 1 x TX 10 x 80 mm
05006172001 1 x TX 15 x 80 mm
05006174001 1 x TX 20 x 80 mm



160 i VDE
05006100001¹⁾ 1 x 0,4 x 2,5 x 80 mm
05006116001 1 x 0,8 x 4 x 150 mm
05006121001 1 x 1 x 5,5 x 200 mm
1) without Lasertip



160 iS
05006440001 1 x 0,6 x 3,5 x 100 mm



K120
11990177 1 x 120 x 50 mm

At the workplace and when out and about



Wera 2go 4 Tool Quiver



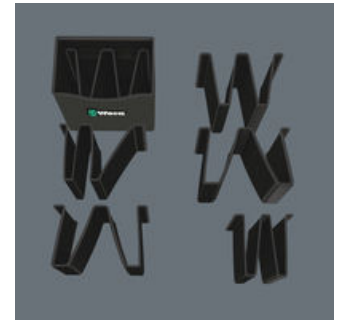
The large set-down area improves the stability of the Tool Quiver. Its large handle means that the quiver can be easily transported or simply hung up at the workplace.

Robust and dimensionally stable



The robust and dimensionally stable material is very resistant against cuts and stabs. The tools carried are protected against damage and moisture. This enhances the service life of the tool box.

Clever organisation



The variably adjustable hook and loop fastener partition in the Tool Quiver ensures neat and tidy arrangement of the tools.

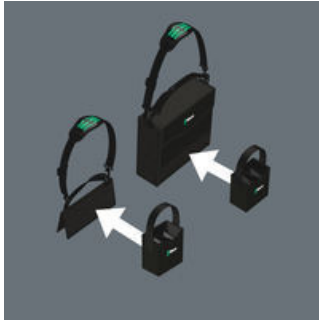
Web link

https://products.wera.de/en/vde_tools_kraftform_plus_series_100_vde_kraftform_2go_100.html

Wera - Kraftform 2go 100
05004310001 -

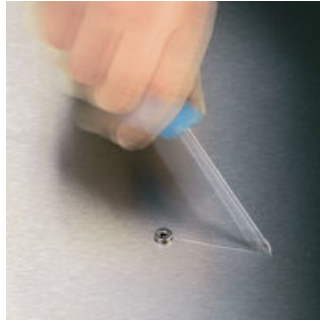
Wera Werkzeuge GmbH
Korzter Straße 21-25
D-42349 Wuppertal
Tel: +49 (0)2 02 / 40 45-0
E-Mail: info@wera.de

Perfect system supplement



Thanks to its hook and loop fastener zone, the Tool Quiver can be docked with the Wera 2go 1 tool carrier and with the Wera 2go 2 tool container.

Lasertip prevents slipping out



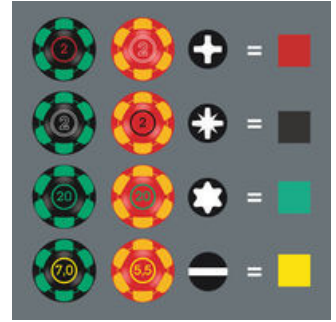
It happens time and time again that the tip slips out of the screw head when screwdriving, sometimes damaging valuable surfaces or even causing injury. The tips of the Wera Lasertip screwdrivers are microscopically roughened by means of a laser. This rough surface literally "bites" itself firmly into the screw head. Slipping out becomes a thing of the past.

Individually tested



The individual testing at 10,000 volts, in accordance with IEC 60900, ensures safe working with loads up to 1,000 volts.

"Take it easy" Tool Finder



Colour coding according to profile and size stamp. This enables faster and more reliable selection of the correct tool from the tool case.

Web link

https://products.wera.de/en/vde_tools_kraftform_plus__series_100_vde_kraftform_2go_100.html

Wera - Kraftform 2go 100
05004310001 -

Wera Werkzeuge GmbH
Korzter Straße 21-25
D-42349 Wuppertal
Tel: +49 (0)2 02 / 40 45-0
E-Mail: info@wera.de